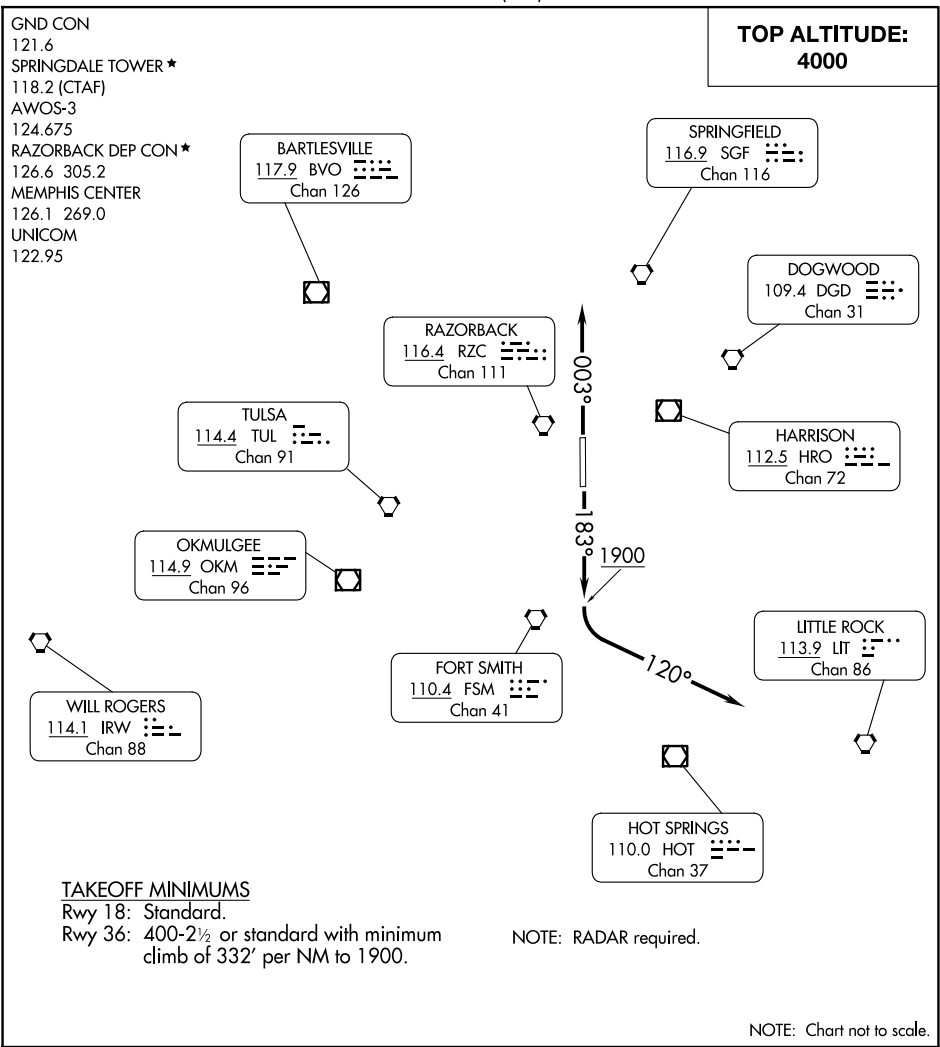


SPRING FIVE DEPARTURE

AL-5165 (FAA)

SPRINGDALE MUNI (ASG)
SPRINGDALE, ARKANSAS



SC-1, 07 AUG 2025 to 04 SEP 2025

SC-1, 07 AUG 2025 to 04 SEP 2025

DEPARTURE ROUTE DESCRIPTION

TAKEOFF RUNWAY 18: Climb on heading 183° to 1900, then turn left heading 120°, thence

TAKEOFF RUNWAY 36: Climb on heading 003°, thence

. . . . Expect radar vectors to filed/assigned route. Climb and maintain 4000. Expect clearance to filed altitude/flight level ten minutes after departure.

LOST COMMUNICATIONS: If communications are not established within 2 minutes after departure, climb and maintain 5000' and proceed direct RZC VORTAC, then proceed on course.

SPRING FIVE DEPARTURE