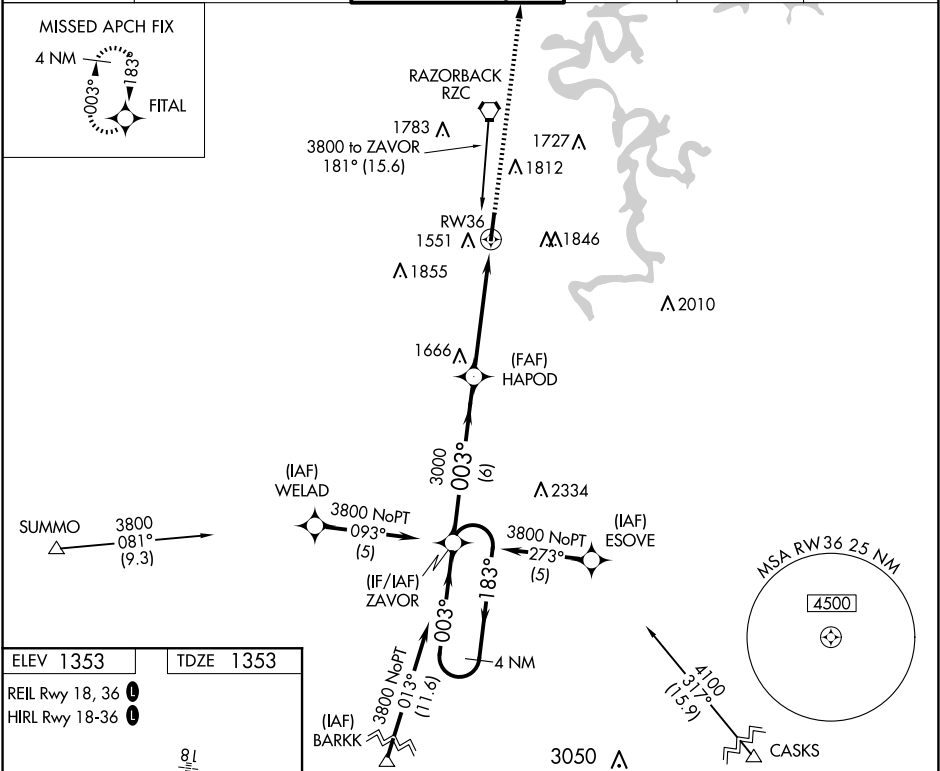


WAAS Ch <b>77512</b> <b>W36A</b>	APP CRS <b>003°</b>	Rwy Idg <b>5302</b> TDZE <b>1353</b> Apt Elev <b>1353</b>
--	------------------------	---

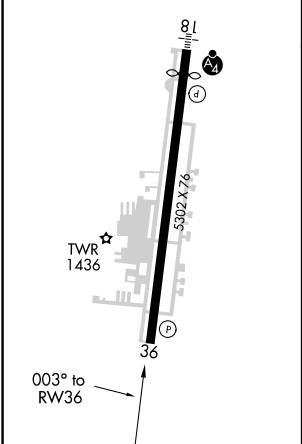
RNAV (GPS) RWY 36  
SPRINGDALE MUNI (ASG)

<p><b>⚠</b> DME/DME RNP-0.3 NA. Circling NA east of Rwy 18-36. When local altimeter setting not received, use Fayetteville/Drake Fld altimeter setting and increase all DA 39 feet and all MDA 40 feet; increase visibility LNAV Cat C/D 1/8 mile and Circling Cat C/D 1/4 mile. Helicopter visibility reduction below 3/4 SM NA.</p>	<p><b>MISSED APPROACH:</b> Climb to 3300 direct FITAL and hold.</p>
---	---

AWOS-3 <b>124.675</b>	RAZORBACK APP CON ★ <b>126.6 305.2</b>	SPRINGDALE TOWER ★ <b>118.2 (CTAF) 0</b>	GND CON <b>121.6</b>	REIL 18, 36 <b>122.8 0</b>	UNICOM <b>122.95</b>
--------------------------	---	---	-------------------------	-------------------------------	-------------------------



ELEV <b>1353</b>	TDZE <b>1353</b>
REIL Rwy 18, 36 <b>0</b>	
HIRL Rwy 18-36 <b>0</b>	



4 NM Holding Pattern		VGSi and RNAV glidepath not coincident (VGSi Angle 3.00/TCH 40).		3300 ↑	FITAL ✦
GP 3.00° TCH 45					
CATEGORY	A	B	C	D	
LPV DA	1603-1 250 (300-1)				
LNAV MDA	1960-1 607 (700-1)		1960-1¾ 607 (700-1¾)		
CIRCLING	1960-1 607 (700-1)	2000-1 647 (700-1)	2020-1¾ 667 (700-1¾)	2220-2¾ 867 (900-2¾)	