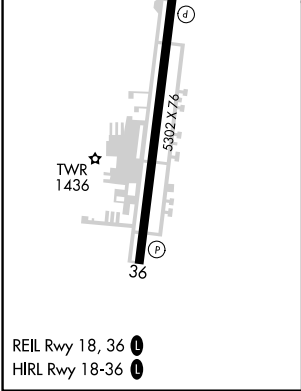
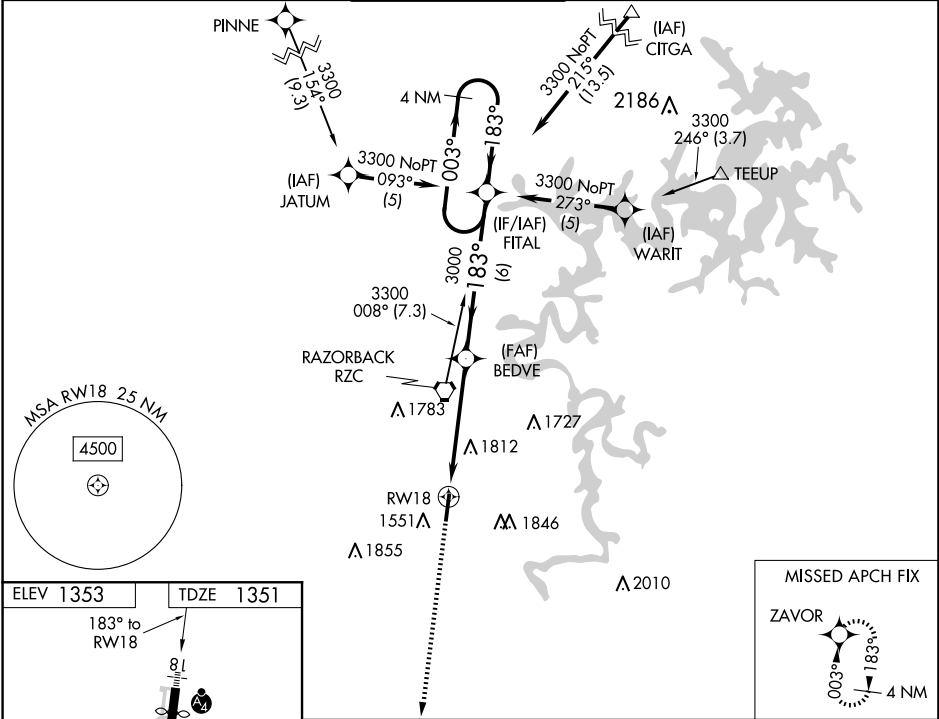


WAAS Ch <b>70312</b> <b>W18A</b>	APP CRS <b>183°</b>	Rwy Idg <b>4939</b> TDZE <b>1351</b> Apt Elev <b>1353</b>
--	------------------------	---

RNAV (GPS) RWY 18  
SPRINGDALE MUNI (ASG)

<p><b>⚠</b> DME/DME RNP-0.3 NA. Circling NA east of Rwy 18-36. When local altimeter setting not received, use Fayetteville/Drake Fld altimeter setting and increase all DA 39 feet and all MDA 40 feet; increase LPV all Cats and LNAV Cat C/D visibility <math>\frac{1}{8}</math> mile, Circling Cat C/D visibility <math>\frac{1}{4}</math> mile. For inoperative MALSF, increase LPV all Cats visibility to 1 mile, LNAV Cat C/D visibility to 2 miles. For inoperative MALSF when using Fayetteville/Drake Fld altimeter setting, increase LPV all Cats visibility to <math>1\frac{1}{8}</math> mile, LNAV Cat C visibility to <math>2\frac{1}{4}</math> mile. VDP NA when using Fayetteville/Drake Fld altimeter setting. Helicopter visibility reduction below <math>\frac{3}{4}</math> SM NA.</p>	<p>MALSF</p> <p><b>⚠</b></p>	<p>MISSED APPROACH: Climb to 3800 direct ZAVOR and hold.</p>
--	------------------------------	--

AWOS-3 <b>124.675</b>	RAZORBACK APP CON ★ <b>126.6 305.2</b>	SPRINGDALE TOWER ★ <b>118.2 (CTAF) 0</b>	GND CON <b>121.6</b>	REIL 18, 36 <b>122.8 0</b>	UNICOM <b>122.95</b>
--------------------------	---	---	-------------------------	-------------------------------	-------------------------



3800

↑

ZAVOR

✧

4 NM

Holding Pattern

\* LNAV only

RW18

2.2 NM

2.8 NM

6 NM

BEDVE

3000

FITAL

3300


003°

←183°

183°

GP 3.00°

TCH 45

CATEGORY	A		B		C	D
LPV DA	1642- <sup>3</sup> / <sub>4</sub> 291 (300- <sup>3</sup> / <sub>4</sub> )					
LNAV/VNAV DA	NA					
LNAV MDA	2080- <sup>3</sup> / <sub>4</sub> 729 (800- <sup>3</sup> / <sub>4</sub> )	2080-1 729 (800-1)	2080-1 <sup>7</sup> / <sub>8</sub> 729 (800-1 <sup>7</sup> / <sub>8</sub> )			
 CIRCLING	2080-1 727 (800-1)		2080-2 727 (800-2)		2220-2 <sup>3</sup> / <sub>4</sub> 867 (900-2 <sup>3</sup> / <sub>4</sub> )	