

LOC I-ASG <b>110.9</b>	APP CRS <b>183°</b>	Rwy Idg TDZE <b>4939</b> <b>1351</b> Apt Elev <b>1353</b>
---------------------------	------------------------	--

AL-5165 (FAA)

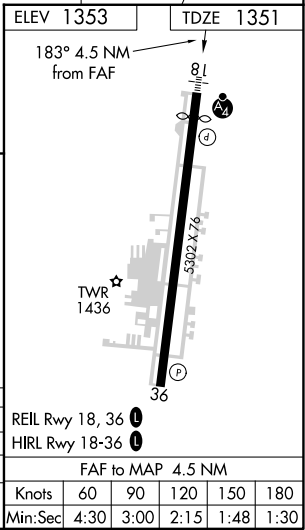
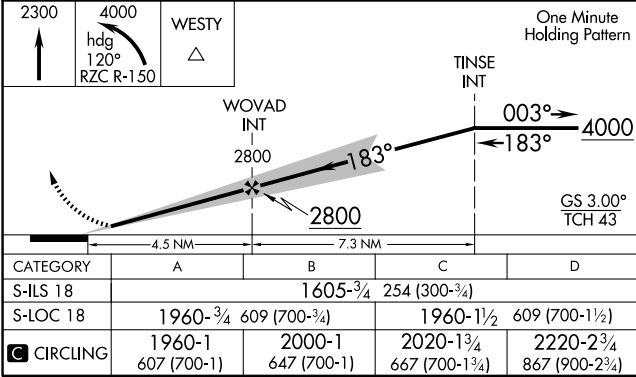
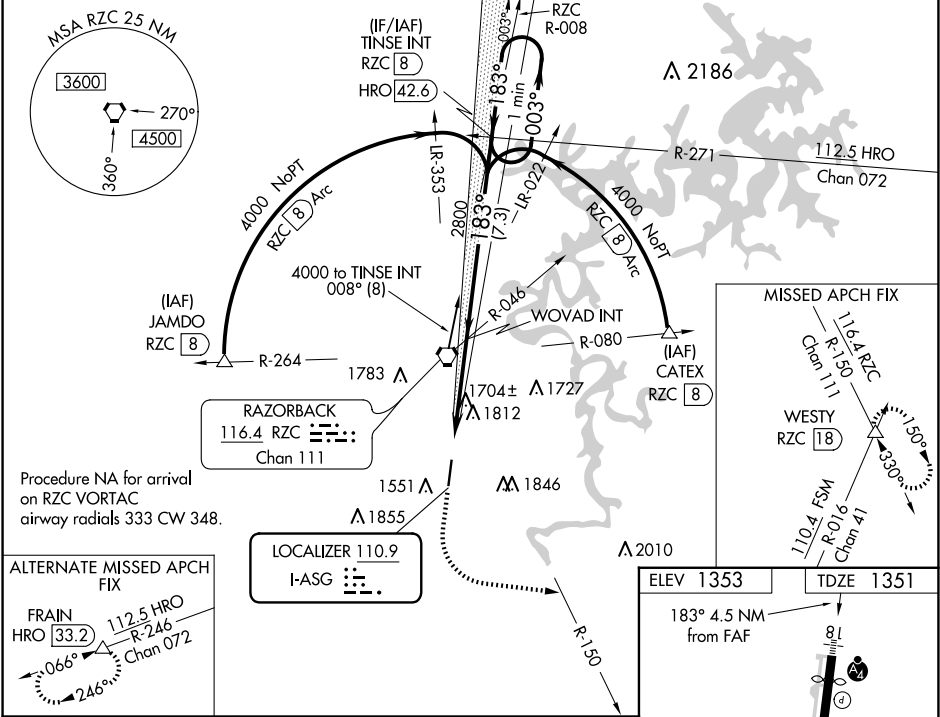
ILS or LOC RWY 18  
SPRINGDALE MUNI (ASG)

**7** Circling NA east of Rwy 18-36. Rwy 18 helicopter visibility reduction below 3/4 SM NA. Autopilot coupled approach NA below 1900. For inop ALS, increase S-ILS 18 visibility to 3/8 SM.

**MAISF**

**MISSED APPROACH:** Climb to 2300 then climbing left turn to 4000 on heading 120° and RZC VORTAC R-150 to WESTY INT/RZC 18 DME and hold.

AWOS-3 <b>124.675</b>	RAZORBACK APP CON ★ <b>126.6 305.2</b>	SPRINGDALE TOWER ★ <b>118.2 (CTAF) 0</b>	GND CON <b>121.6</b>	REIL 18, 36 <b>122.8 0</b>	UNICOM <b>122.95</b>
--------------------------	---	---	-------------------------	-------------------------------	-------------------------



SC-1, 07 AUG 2025 to 04 SEP 2025

SC-1, 07 AUG 2025 to 04 SEP 2025