

VORTAC MHz <b>113.2</b> Chan <b>79</b>	APP CRS <b>167°</b>	Rwy Idg TDZE <b>325</b> Apt Elev <b>325</b>
--	------------------------	---

VOR RWY 17  
BRUCE CAMPBELL FLD (MBO)

DME required.

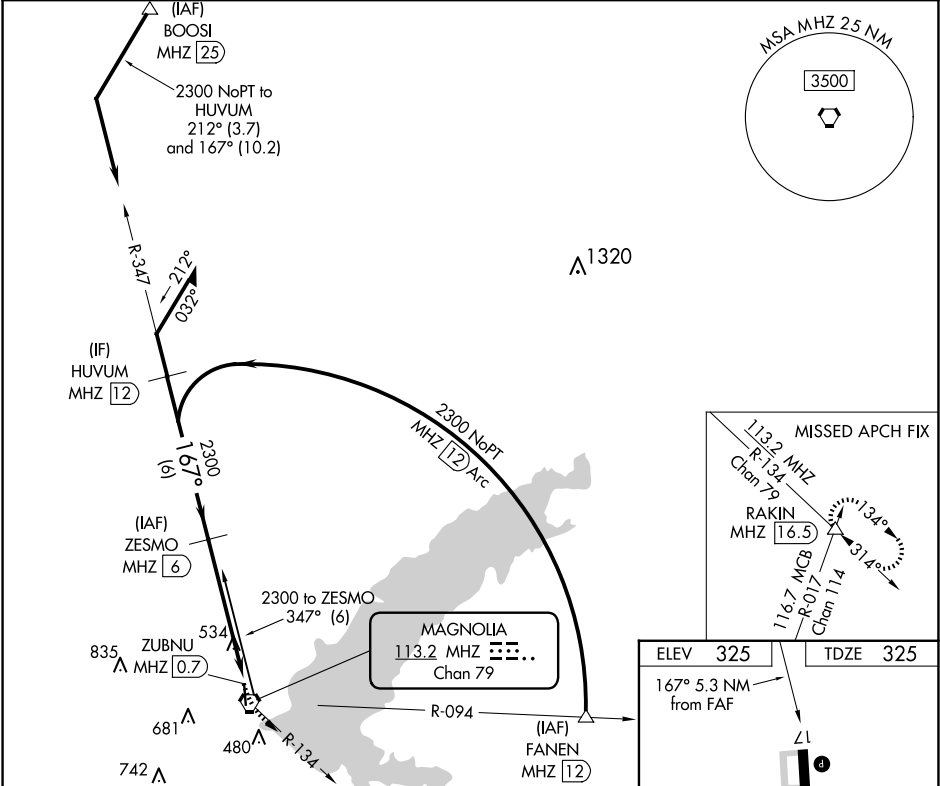
▼

▲

Rwy 17 helicopter visibility reduction below 1 SM NA. When local altimeter setting not received, use Jackson-Medgar Wiley Evers Intl altimeter setting and increase all MDA 40 feet, and Circling Cts C/D ¼ SM. Straight-in Rwy 17 NA at night, Circling Rwy 17 NA at night.

MISSED APPROACH: Climbing left turn to 3000 on MHz VORTAC R-134 to RAKIN INT/MHz 16.5 DME.

AWOS-3PT <b>119.125</b>	JACKSON APP CON ★ <b>123.9 317.7</b>	CLNC DEL <b>125.9</b>	UNICOM <b>122.8 (CTAF) 0</b>
----------------------------	---	--------------------------	---------------------------------



Remain within 10 NM

VGSI and descent angles not coincident (VGSI Angle 3.00/TCH 38).

3000 MHz R-134

RAKIN

ZESMO MHz [6]

347°

2300

167°

3.42° TCH 38

ZUBNU MHz [0.7]

5.3 NM

CATEGORY	A	B	C	D
S-17	800-1	475 (500-1)	800-1⅓	475 (500-1⅓)
CIRCLING	820-1 495 (500-1)	840-1 515 (600-1)	1040-2 715 (800-2)	1040-2¼ 715 (800-2¼)

ELEV 325 TDZE 325

167° 5.3 NM from FAF

L1

4444 X 75

35

MIRL Rwy 17-35 0