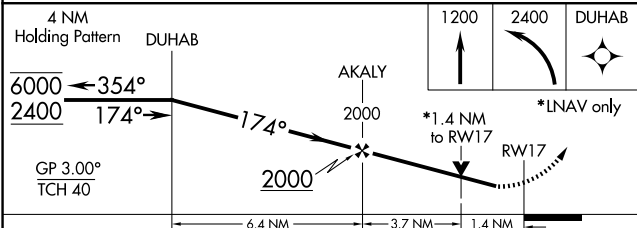
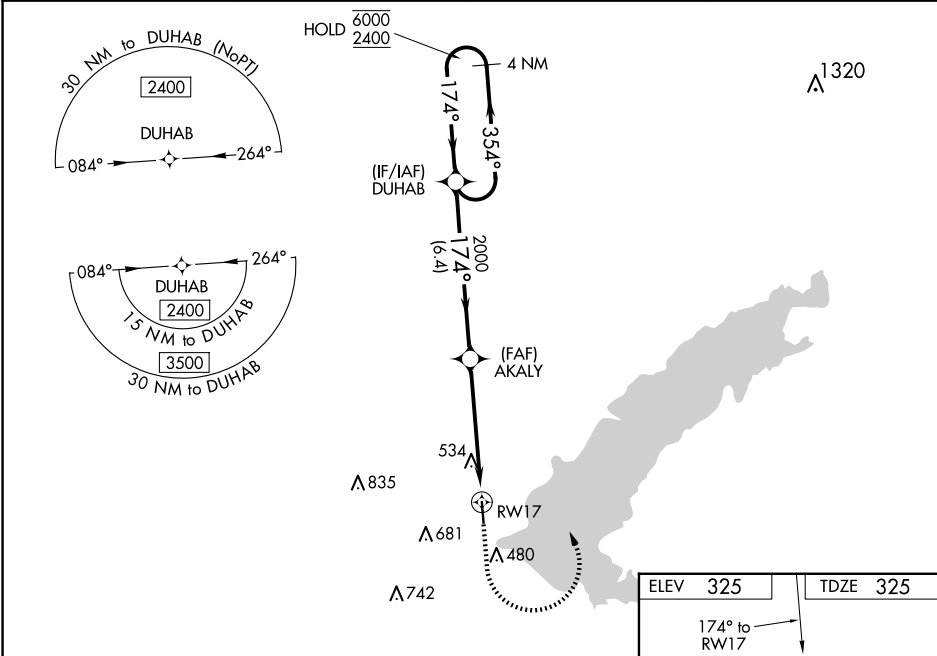


WAAS CH <b>69231</b> <b>W17A</b>	APP CRS <b>174°</b>	Rwy Idg TDZE <b>325</b> Apt Elev <b>325</b>
--	------------------------	---

RNAV (GPS) RWY 17  
BRUCE CAMPBELL FLD (MBO)

RNP APCH. ▼ Baro-VNAV and VDP NA when using Jackson-Medgar Wiley Evers Intl altimeter setting. ▲ Rwy 17 helicopter visibility reduction below ¾ SM NA. For uncompensated Baro-VNAV systems, LNAV/VNAV NA below -15°C or above 54°C. When local altimeter setting not received, use Jackson-Medgar Wiley Evers Intl altimeter setting and increase all DA 21 feet and all MDA 40 feet, and increase LNAV/VNAV visibility ⅓ SM, and Circling Cats C/D visibility ¼ mile.	MISSED APPROACH: Climb to 1200 then climbing left turn to 2400 direct DUHAB and hold.
--	---

AWOS-3PT <b>119.125</b>	JACKSON APP CON ★ <b>123.9 317.7</b>	CLNC DEL <b>125.9</b>	UNICOM <b>122.8</b> (CTAF) ❶
----------------------------	---	--------------------------	---------------------------------



CATEGORY	A	B	C	D
LPV DA	600-7⅞	275 (300-7⅞)		
LNAV/VNAV DA	832-1⅓	507 (600-1⅓)		
LNAV MDA	800-1	475 (500-1)	800-1⅓	475 (500-1⅓)
CIRCLING	820-1 495 (500-1)	840-1 515 (600-1)	1040-2 715 (800-2)	1040-2¼ 715 (800-2¼)

