

ELY, NEVADA

AL-5163 (FAA)

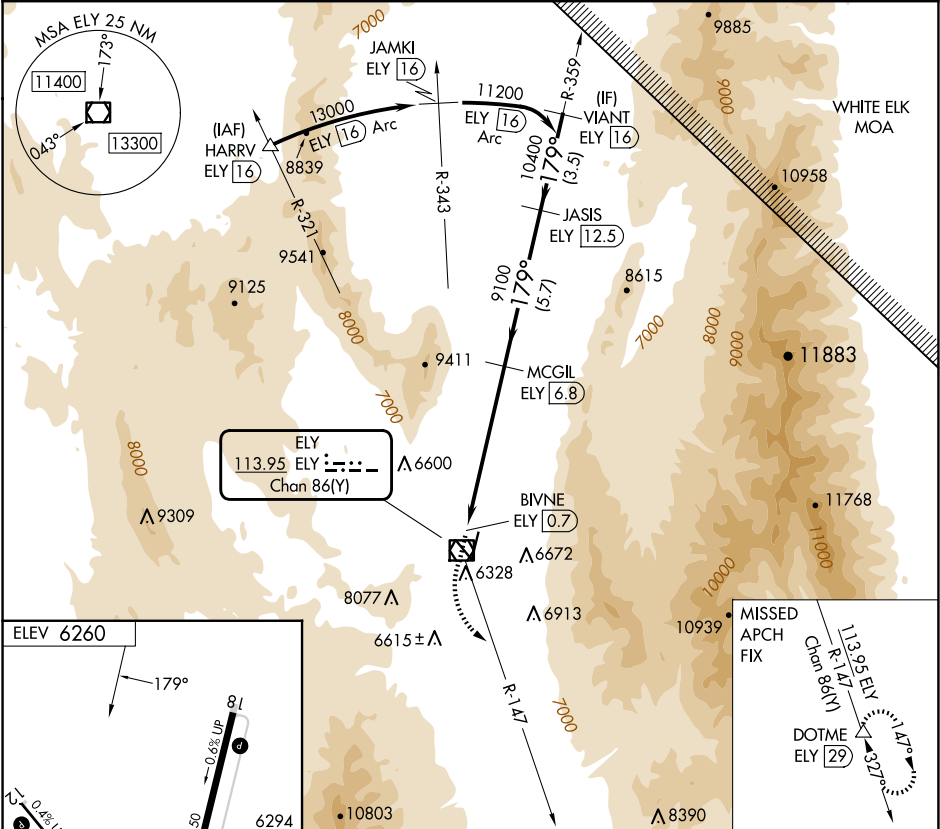
25163

| | | |
|--|------------------------|--|
| VOR/DME ELY 113.95 Chan 86(Y) | APP CRS 179° | Rwy Ldg TDZE Apt Elev N/A N/A 6260 |
|--|------------------------|--|

VOR-C
ELY/YELLAND FLD (ELY)

| | |
|--|--|
| DME required. | MISSED APPROACH: Climb to 8800 then climbing left turn to 12000 on ELY VOR/DME R-147 to DOTME/ELY 29 DME and hold. |
| ▼ Rwy 30 helicopter visibility reduction below 1 SM NA. Circling Rwy 30 NA at night. Circling NA for Cats A and B southwest of Rwy 12 and west of Rwy 36. Circling NA for Cats C and D southwest of Rwy 12 and east of Rwy 18. | |

| | | |
|------------------------|---|---------------------------------|
| ASOS 120.625 | SALT LAKE CENTER 133.45 317.625 | UNICOM 122.8 (CTAF) 1 |
|------------------------|---|---------------------------------|



| | | | | | |
|--|-------------------|---------------|---------------|----------------|--------------|
| MIRL Rwy 12-30 1 HIRL Rwy 18-36 1 REIL Rwy 18 and 36 1 | 8800 | 12000 | DOTME | JASIS ELY 12.5 | VIANT ELY 16 |
| | ELY R-147 | ELY R-147 | △ | 11200 | 11200 |
| BIVNE ELY 0.7 | | MCGIL ELY 6.8 | 9100 | 10400 | 11200 |
| 6 NM | | 5.7 NM | 3.5 NM | | |
| CATEGORY | A | B | C | D | |
| 8140-1 1/4 | 8140-1 1/2 | 8140-3 | 8220-3 | | |
| 1880 (1900-1 1/4) | 1880 (1900-1 1/2) | 1880 (1900-3) | 1960 (2000-3) | | |

ELY, NEVADA

Amtd 2B 12JUN25

39°18'N-114°51'W

ELY/YELLAND FLD (ELY)
VOR-C

SW-4, 07 AUG 2025 to 04 SEP 2025

SW-4, 07 AUG 2025 to 04 SEP 2025