

TACAN RWY 30

TACAN NSI	APCH CRS	Rwy Idg
Chan 39	290°	TDZE 506
		Arprt Elev 506

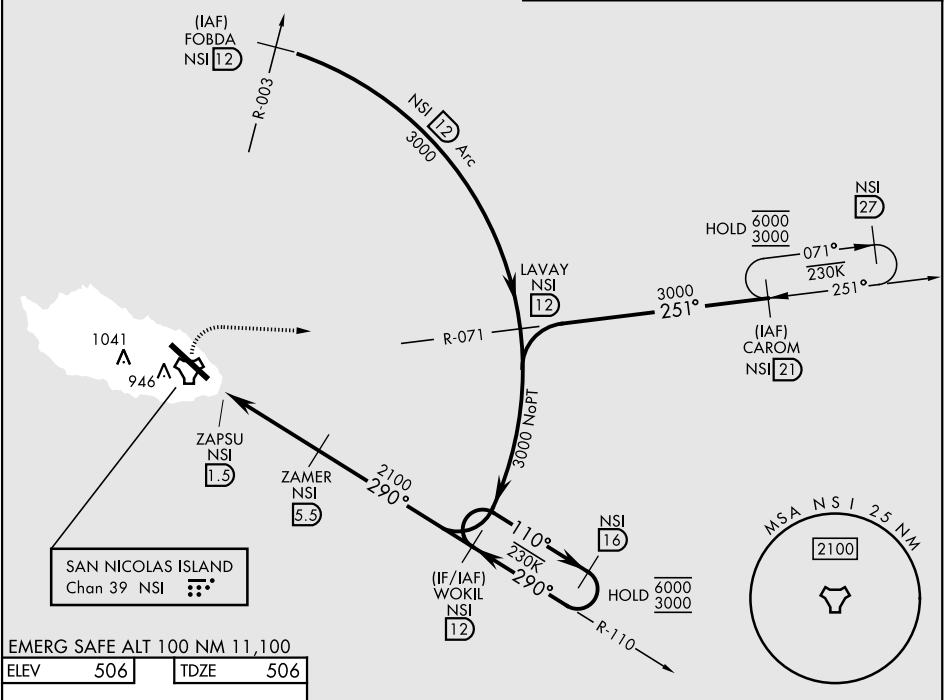
[USN]

SAN NICOLAS ISLAND NOLF (KNSI)

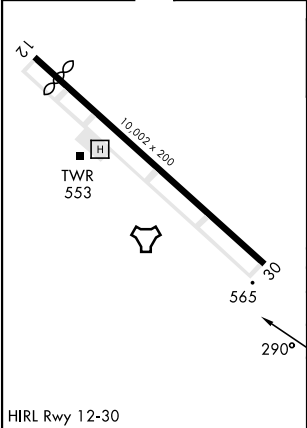
RADAR required	MISSED APPROACH: Climb to 1000, then climbing right turn to 3000, intercept NSI TACAN R-071 to LAVAY. Arc south on 12 DME arc to WOKIL.
* Circling not authorized SW of Rwy 12-30.	

TOWER ★
126.85 379.3

Knots	60	120	180	240	300	360
V/V(fpm)	242	484	726	968	1210	1452
#Min climb of 242 ft/NM to 1400 - Controlling Obstacle Unk						



EMERG SAFE ALT 100 NM 11,100			
ELEV	506	TDZE	506



	1000	3000	LAVAY NSI 12	WOKIL NSI 12	NSI 16
	NSI R-071		ZAMER NSI 5.5		
	NSI TACAN	ZAPSU NSI 1.5	2100	110°	6000 3000
		3.00°	TCH 50		
	0.8	4 NM			
CATEGORY	A	B	C	D	E
S-30 #	820-1 314 (400-1)				
S-30	920-1 414 (500-1)	920-1 414 (500-1)		1060-2 554 (600-2)	
CIRCLING*	920-1 414 (500-1)	960-1 454 (500-1)	960-1 454 (500-1)	1060-2 554 (600-2)	

TACAN RWY 30

SW-3, 07 AUG 2025 to 04 SEP 2025

SW-3, 07 AUG 2025 to 04 SEP 2025