

RNAV (GPS) RWY 30

WAAS CH 47673 W30A	APCH CRS 301°	Rwy Idg 10,002 TDZE 506 Arpt Elev 506
--------------------------	------------------	---

- (USN)

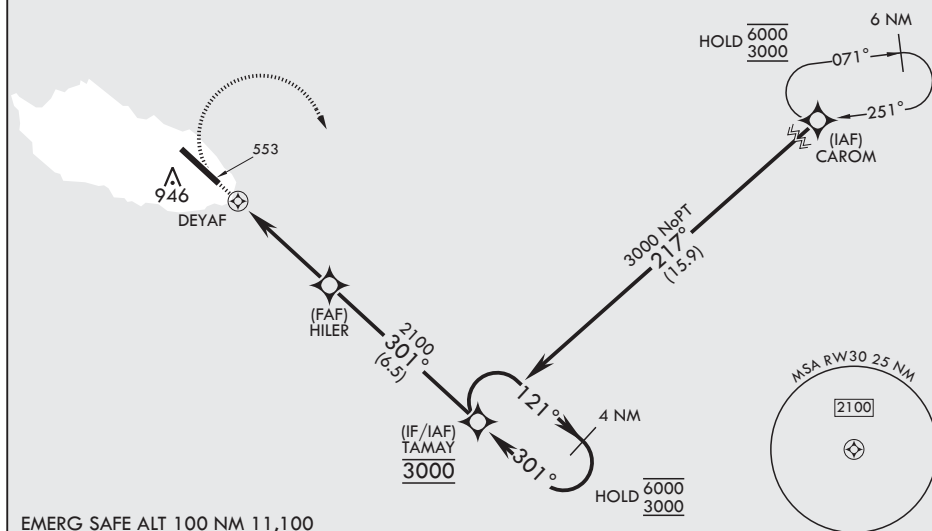
SAN NICOLAS ISLAND NOLF (KNSI)

RNP APCH-GPS

T * Circling not authorized SW of Rwy 12-30.

MISSED APPROACH: Climb to 1100, then climbing right to 3000 direct TAMAY and hold.

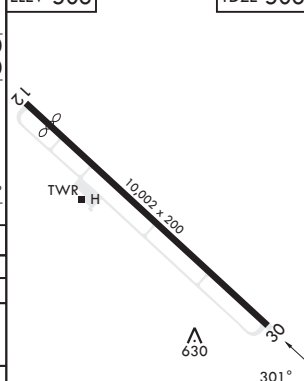
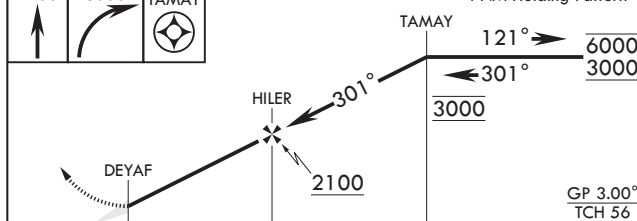
TOWER★
126.85 379.3



4 NM Holding Pattern

ELEV 506

TDZE 506



	0.8	← 4 NM →			
CATEGORY	A	B	C	D	E
LPV DA	706-¾		200	(200-¾)	
LNAV MDA	880-1	374	(400-1)	920-1½ 414 (500-1½)	980-1½ 474 (500-1½)
CIRCLING*	880-1 374 (400-1)	960-1 454 (500-1)	960-1½ 454 (500-1½)	1060-2 554 (600-2)	

HIRL all rwys

SAN NICOLAS ISLAND, CALIFORNIA

33°14'N - 119°27'W

SAN NICOLAS ISLAND NOLF (KNSI)

Amdt 1 10JUL25

RNAV (GPS) RWY 30

SW-3, 07 AUG 2025 to 04 SEP 2025

SW-3, 07 AUG 2025 to 04 SEP 2025