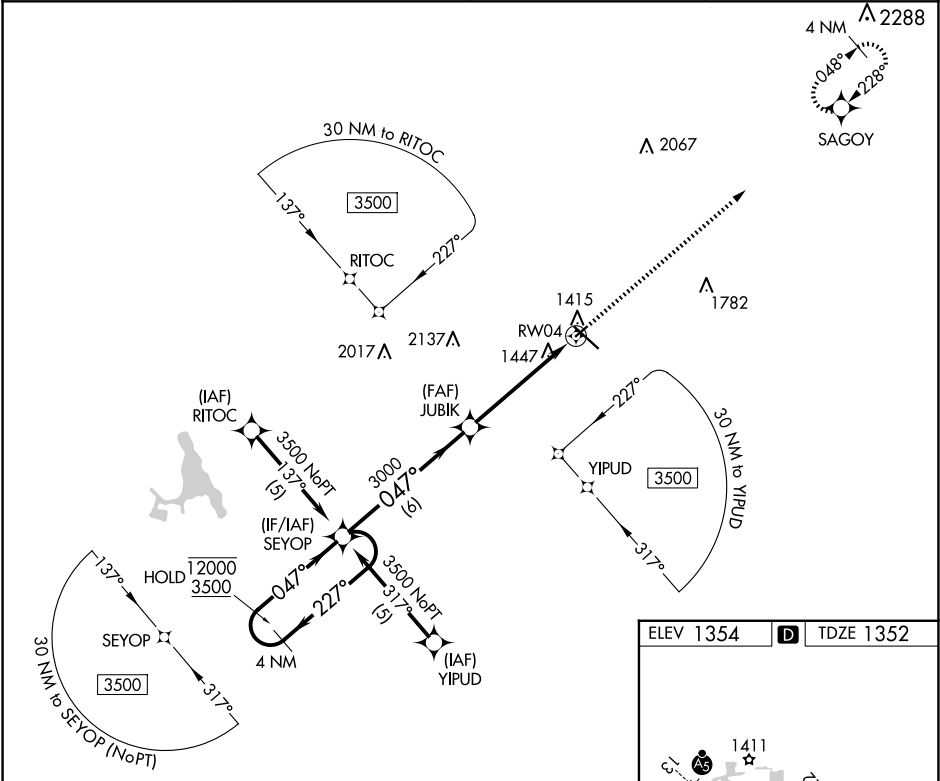


APP CRS	Rwy Ldg	3075
047°	TDZE	1352
	Apt Elev	1354

RNAV (GPS) RWY 4  
RANGE RGNL (HIB)

RNP APCH - GPS.	MISSED APPROACH: Climb to 3500 direct SAGOY and hold.
▼ ▲ 33 -40°C	Rwy 4 helicopter visibility reduction below 3/4 SM NA. VDP NA when using Eveleth altimeter setting. When local altimeter setting not received, use Eveleth altimeter setting and increase all MDAs 40 feet.

ASOS 126.425	DULUTH APP CON 125.45 233.7	CLNC DEL 127.4	UNICOM 123.0 (CTAF) 0
-----------------	--------------------------------	-------------------	--------------------------



	4 NM Holding Pattern	SEYOP	JUBIK	3500	SAGOY
	12000	3500	3000	1.2 NM to RW04	
	227°	047°	047°	3.03° TCH 45	
	6 NM	3.8 NM	1.2 NM		
CATEGORY	A	B	C	D	
LNAB MDA	1780-1	428 (500-1)	NA		
CIRCLING	1900-1	546 (600-1)	NA		

