

APP CRS	Rwy Ldg	3075
227°	TDZE	1352
	Apt Elev	1354

RNAV (GPS) RWY 22
RANGE RGNL (HIB)

RNP APCH - GPS.

T Rwy 22 helicopter visibility reduction below $\frac{3}{4}$ SM NA. VDP NA when
A using Eveleth altimeter setting. When local altimeter setting not received,
S -40°C use Eveleth altimeter setting and increase all MDAs 40 feet.

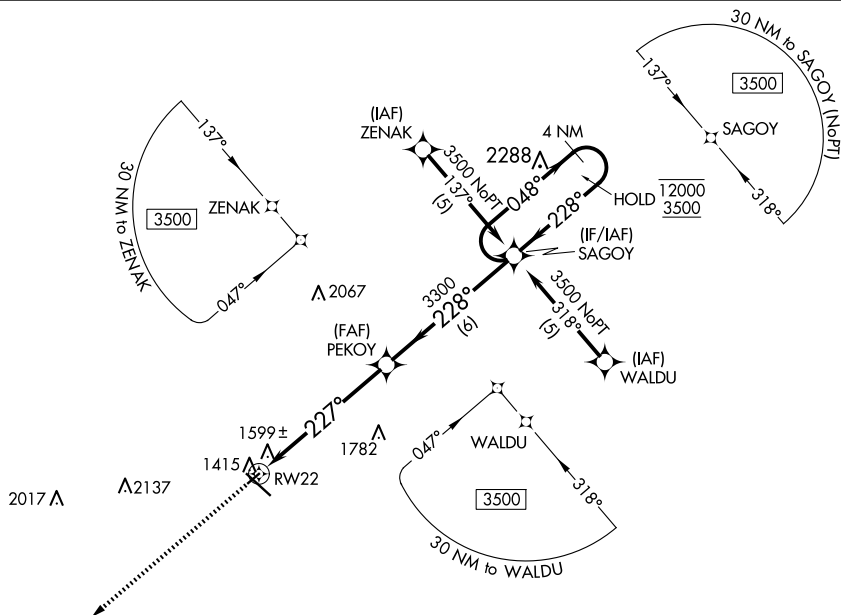
MISSED APPROACH: Climb to 3500 direct SEYOP and hold.

ASOS
126.425

DULUTH APP CON
125.45 233.7

CLNC DEL
127.4

UNICOM
123.0 (CTAF) 





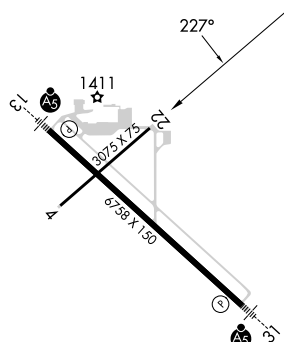
3500	SEYOP
	

Figure 1 illustrates a sample flight profile. The profile starts at a point 1.5 NM from RW22, with a 2.99° TCH 45. The initial heading is 227°, and the altitude is 3300. The profile then turns to a heading of 228°, with an altitude of 3500. The distance between the start point and the turn point is 4.6 NM. The profile then turns to a heading of 048°, with an altitude of 12000. The distance between the turn point and the end point is 6 NM. The end point is a 4 NM Holding Pattern. The profile is labeled with 'PEKOY' and 'SAGOY' at key points.

CATEGORY	A	B	C	D
INAV MDA	1860-1	508 (600-1)	NA	
CIRCLING	1900-1	546 (600-1)	NA	

ELEV 1354	D	TDZE 1352
-----------	----------	-----------

HIRL Rwy 13-31 **L**

RNAV (GPS) RWY 22