

LOC I-HIB <u>108.75</u>	APP CRS 310°	Rwy Ldg 6758 TDZE 1345 Apt Elev 1354
-----------------------------------	------------------------	---

ILS or LOC RWY 31
RANGE RGNL (HIB)

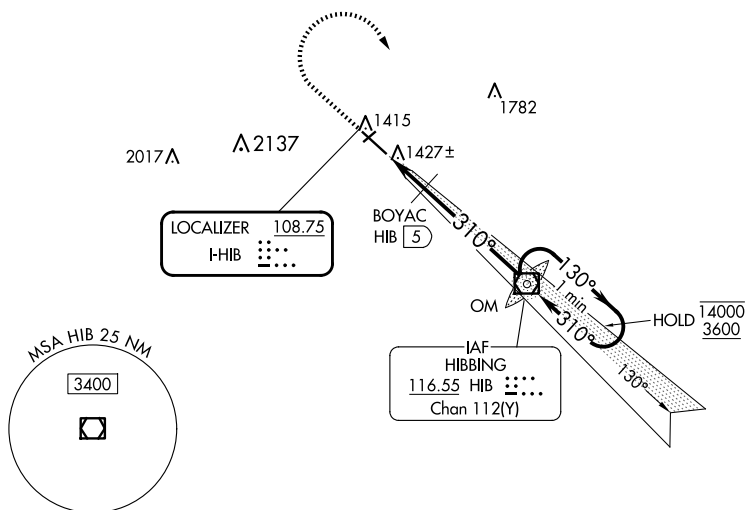
V VDP NA when using Eveleth altimeter setting. Caution opposing ILS continuously on.
A When local altimeter setting not received, use Eveleth altimeter setting and increase
✱ -40°C S-LSL 31 Cat to 1581 feet; increase all MDAs 40 feet and increase S-LOC 31 Cat
 C/D visibility $\frac{1}{8}$ SM and Circling Cat C $\frac{1}{4}$ SM. Increase BOYAC fix minimums
 S-LOC 31 Cat C/D visibility $\frac{1}{8}$ SM and Circling Cat C $\frac{1}{4}$ SM. For inop ALS when
 using Eveleth altimeter setting, increase BOYAC fix minimums S-LOC 31 Cat C/D
 visibility to 1 SM. *1780 when using Eveleth altimeter setting. #DME from HIB
 VOR/DME. DME use requires simultaneous reception of I-HIB and HIB DME.

MALSR

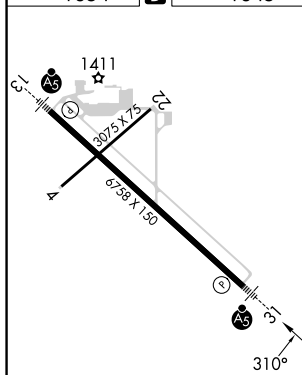


MISSED APPROACH:
Climb to 2500 then
climbing right turn to
3600 direct HIB
VOR/DME and hold.

ASOS 126.425	DULUTH APP CON 125.45 233.7	CLNC DEL 127.4	UNICOM 123.0 (CTAF) ①
------------------------	---------------------------------------	--------------------------	---------------------------------



ELEV 1354	D	TDZE 1345
-----------	----------	-----------

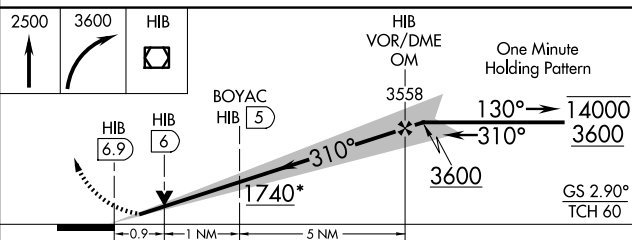
HIRL Rwy 13-31 **L**

FAF to MAP 6.9 NM

Knots	60	90	120	150	180
Min:Sec	6:54	4:36	3:27	2:46	2:18

HIBBING, MINNESOTA

Amdt 13B 21MAR24



CATEGORY	A	B	C	D
S-ILS 31	1545-½ 200 (200-½)			
S-LOC 31	1740-½ 395 (400-½)		1740-⅝ 395 (400-⅝)	
CIRCLING	1900-1 546 (600-1)		1920-1½ 566 (600-1½)	1980-2 626 (700-2)
# BOYAC FIX MINIMUMS				
S-LOC 31	1680-½ 335 (400-½)			
CIRCLING	1900-1 546 (600-1)		1920-1½ 566 (600-1½)	1980-2 626 (700-2)

RANGE RGNI (HIB)

ILS or LOC RWY 31