

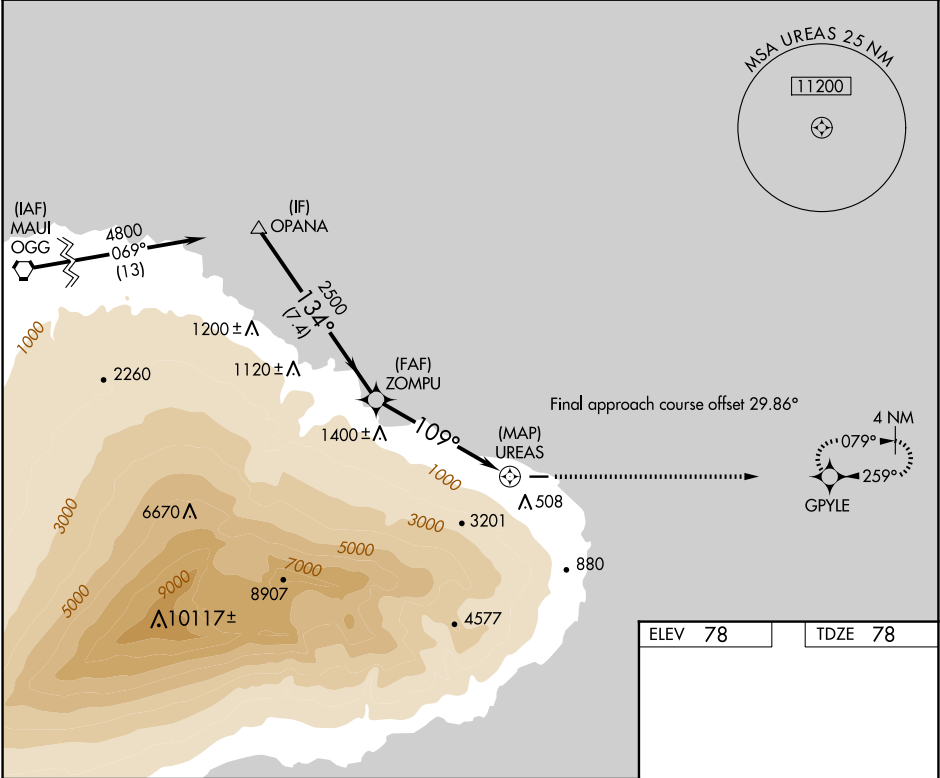
APP CRS	Rwy Idg	3606
109°	TDZE	78
	Apt Elev	78

RNAV (GPS) RWY 8

HANA (HNM)(PHHN)

RNP APCH.	MISSED APPROACH: Climb to 2500 direct GPYLE and hold.
NA Circling NA south of Rwy 8-26. Procedure NA at night. Rwy 8 helicopter visibility reduction below 1 SM NA. When local altimeter setting not received, procedure NA.	

AWOS-3PT 118.325	HCF CENTER 118.45 278.3	CLNC DEL 122.3	CTAF 122.9 0
---------------------	----------------------------	-------------------	-----------------



ELEV 78

TDZE 78

2500

GPYLE

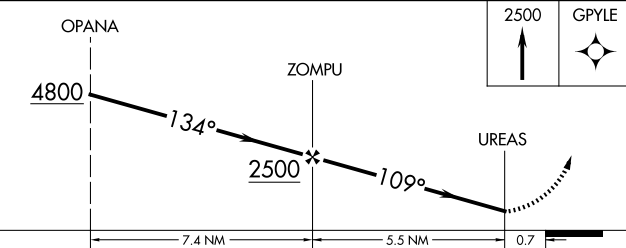



GPYLE

3606 X 100

0.7% UP

109°

MIRL Rwy 8-26 0

					
CATEGORY	A	B	C	D	
LNAV MDA	1500-1¼ 1422 (1500-1¼)	1500-1½ 1422 (1500-1½)	NA		
 CIRCLING	1500-1¼ 1422 (1500-1¼)	1500-1½ 1422 (1500-1½)	NA		

PAC, 07 AUG 2025 to 02 OCT 2025

PAC, 07 AUG 2025 to 02 OCT 2025