

APP CRS
259°

Rwy Idg
TDZE
Apt Elev

3606
70
78

RNAV (GPS) RWY 26

HANA (HNM)(PHHN)

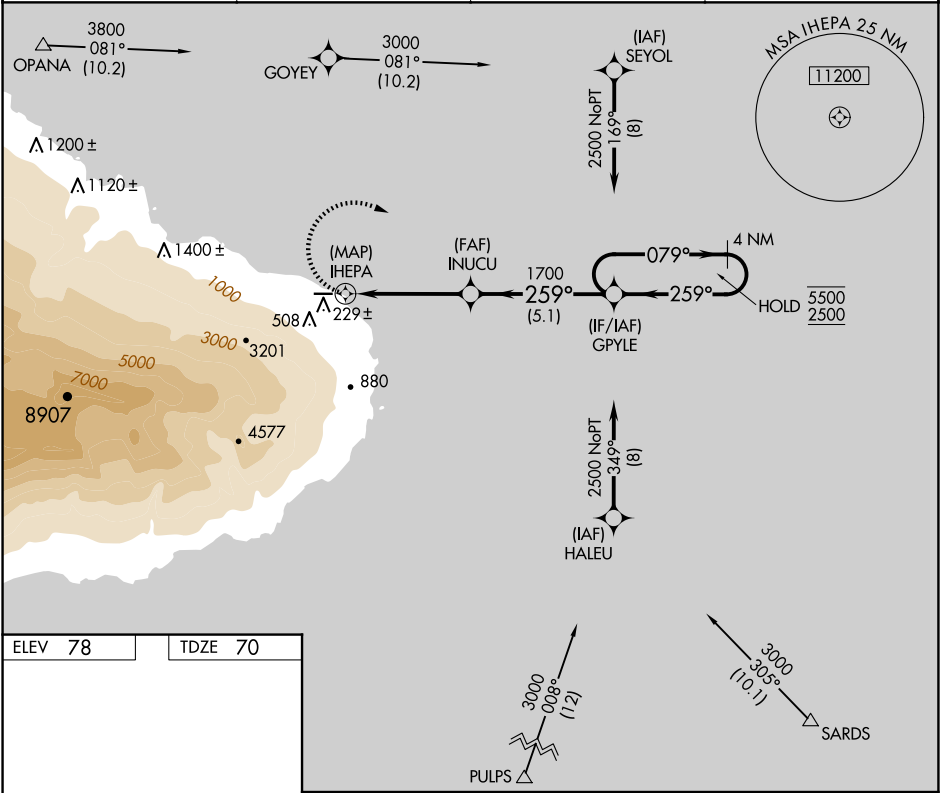
RNP APCH+GPS.

⚠

Circling NA south of Rwy 8-26. Procedure NA at night.
When local altimeter setting not received, procedure NA.

MISSED APPROACH: Climbing right turn to 2500 direct GPLYE and hold.

AWOS-3PT 118.325	HCF CENTER 118.45 278.3	CLNC DEL 122.3	CTAF 122.9 0
---------------------	----------------------------	-------------------	-----------------



ELEV 78

TDZE 70

3606 X 100

0.7% UP

259°

2500

GPLYE

INUCU

GPLYE

4 NM Holding Pattern

IHEPA

2.1 NM to IHEPA

3.04° TCH 40

1700

079°

5500

2500

0.5

2.1 NM

2.4 NM

5.1 NM

CATEGORY	A	B	C	D
LNAV MDA	940-1 870 (900-1)	940-1¼ 870 (900-1¼)	NA	
CIRCLING	940-1¼ 862 (900-1¼)	1100-1½ 1022 (1100-1½)	NA	