

APP CRS
069°

Rwy Idg
TDZE
Apt Elev

2927
82
86

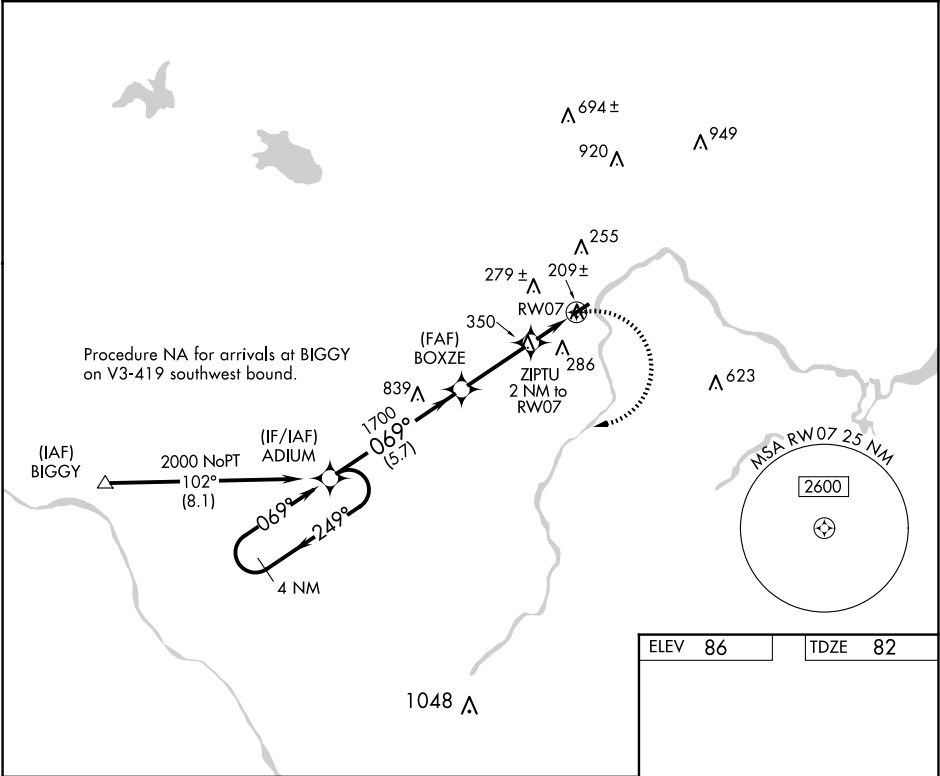
RNAV (GPS) RWY 7
CENTRAL JERSEY RGNL (47N)

RNP APCH:
NA

Procedure NA at night. Use Trenton altimeter setting; when not received, use Newark altimeter setting, and increase all MDAs 20 feet. Rwy 7 helicopter visibility reduction below 1 SM NA.

MISSED APPROACH: Climbing right turn to 2000 direct ADIUM and hold.

TTN ASOS 126.775	NEWARK APP CON 132.8 379.9	UNICOM 122.7 (CTAF)
----------------------------	--------------------------------------	-------------------------------



4 NM Holding Pattern

VGSI and descent angles not coincident (VGSI Angle 3.40/TCH 36).

2000

ADIUM

CATEGORY	A	B	C	D
LNAV MDA	580-1	498 (500-1)	580-1 3/8 498 (500-1 3/8)	NA
CIRCLING	620-1 534 (600-1)	700-1 614 (700-1)	700-1 3/4 614 (700-1 3/4)	NA

UURL Rwy 7-25