

WAAS CH <b>48911</b> <b>W13A</b>	APP CRS <b>128°</b>	Rwy Idg TDZE Apt Elev	<b>4500</b> <b>1885</b> <b>1915</b>
--	------------------------	-----------------------------	---

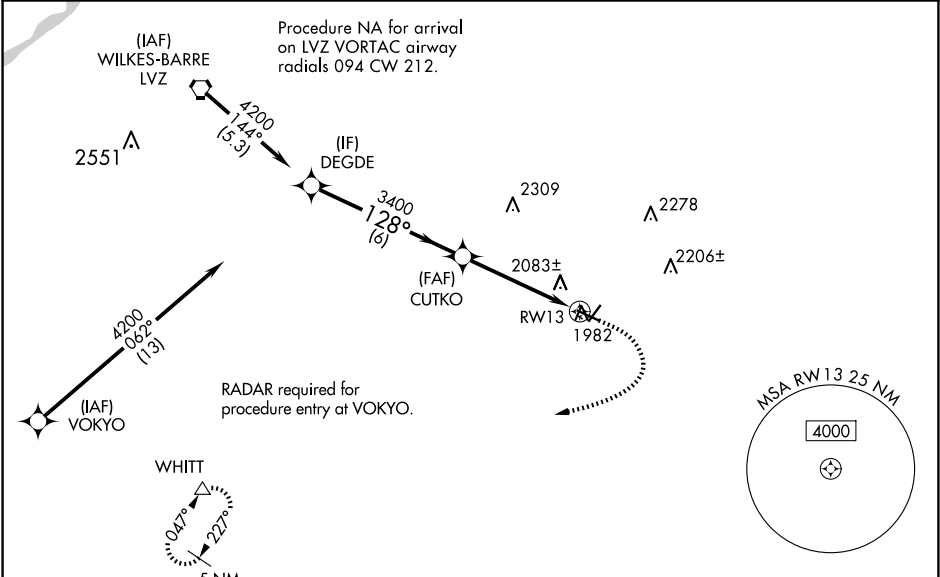
RNAV (GPS) RWY 13

POCONO MOUNTAINS RGNL (MPO)

**⚠** For uncompensated Baro-VNAV systems, LNAV/VNAV NA below -18° C (0° F) or above 54° C (130° F).  
**⚠** Baro-VNAV and VDP NA when using Wilkes-Barre/Scranton altimeter setting. Rwy 13 helicopter visibility reduction below ¾ SM NA. DME/DME RNP-0.3 NA. When local altimeter setting not received, use Wilkes-Barre/Scranton altimeter setting: increase LPV DA to 2450 feet, LNAV/VNAV DA to 2537 feet and all visibilities ½ SM; increase all MDAs 180 feet and visibility LNAV Cat C/D ⅓ SM and Circling Cat C/D ½ SM. Circling Rwy 23 NA at night.

**MISSED APPROACH:**  
Climb to 3000 then climbing right turn to 4200 direct WHITT and hold.

ASOS <b>120.275</b>	WILKES-BARRE APP CON <b>126.3 256.7</b>	CLNC DEL <b>125.3</b>	UNICOM <b>122.7 (CTAF) 0</b>
------------------------	--	--------------------------	---------------------------------



	ELEV 1915	TDZE 1885
--	-----------	-----------

VGSI and RNAV glidepath not coincident (VGSI Angle 3.00/TCH 44).

4200  
128°  
3400  
3000  
1.3 NM to RWY 13  
RWY 13  
\* LNAV only.

CATEGORY	A	B	C	D
LPV DA	2271-1¼		386 (400-1¼)	
LNAV/VNAV DA	2358-1½		473 (500-1½)	
LNAV MDA	2340-1	455 (500-1)	2340-1⅓	455 (500-1⅓)
CIRCLING	2420-1 505 (600-1)	2500-1 585 (600-1)	2600-2 685 (700-2)	2660-2½ 745 (800-2½)

REIL Rwys 5, 13, 23, and 31 0  
MIRL Rwys 5-23 and 13-31 0