

| | | | |
|----------------|-------------|----------|-------------|
| VOR/DME SWO | APP CRS | Rwy Idg | 7401 |
| 108.4 | 178° | TDZE | 1000 |
| Chan 21 | | Apt Elev | 1000 |

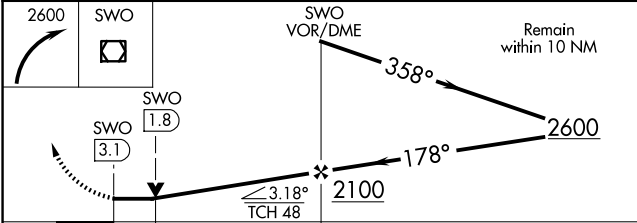
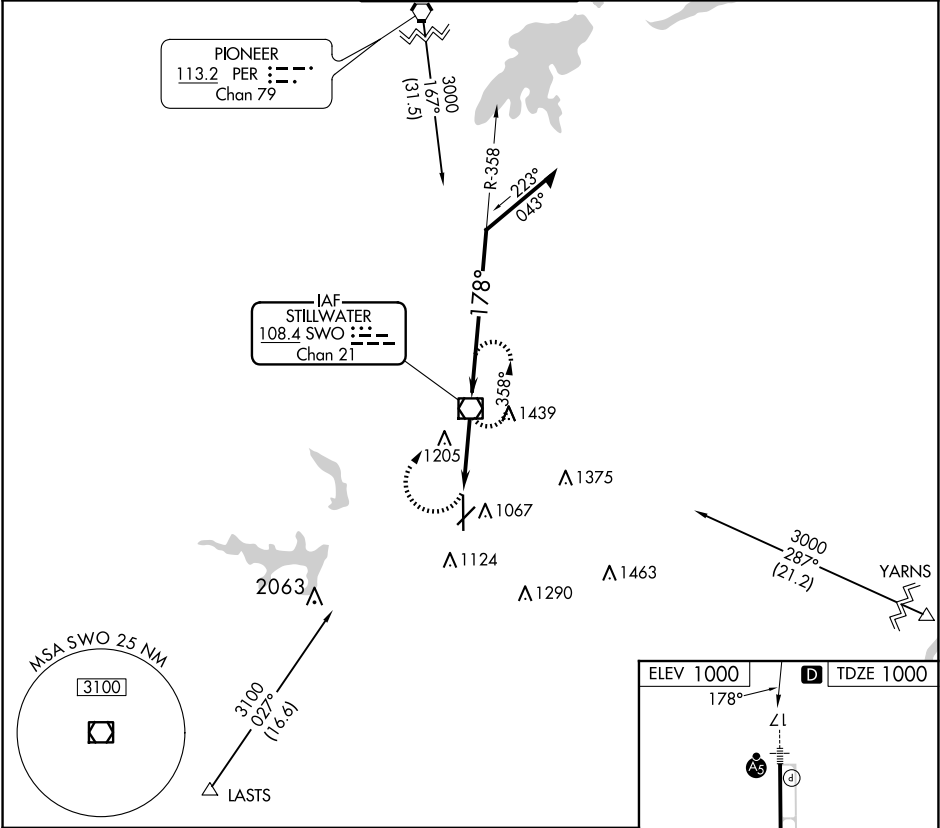
VOR RWY 17
STILLWATER RGNL (SWO)

⚠ When local altimeter setting not received, use Ponca City Rgnl altimeter setting and increase all MDA 80 feet and Circling Cat D visibility ½ mile. VDP NA with Ponca City altimeter setting. For inop MALSR increase S-17 Cats A/B visibility to 1 mile. Helicopter visibility reduction below ¾ SM NA.

MALSR

MISSED APPROACH:
Climbing right turn to 2600
direct SWO VOR/DME
and hold.

| | | | | |
|------------------------|--|--|-------------------------|-------------------------|
| ASOS 135.725 | KANSAS CITY CENTER 127.8 319.1 | STILLWATER TOWER ★ 125.35 (CTAF) 0 | GND CON 121.6 | UNICOM 122.95 |
|------------------------|--|--|-------------------------|-------------------------|



| CATEGORY | A | B | C | D |
|----------|--------------------|----------------------|----------------------|--------------------|
| S-17 | 1460-¾ 460 (500-¾) | | | 1460-1 460 (500-1) |
| CIRCLING | 1460-1 460 (500-1) | 1520-1½ 520 (600-1½) | 1740-2¼ 740 (800-2¼) | |

