

STILLWATER, OKLAHOMA

AL-5151 (FAA)

23222

WAAS CH 42633 W35A	APP CRS 354°	Rwy Idg 7401 TDZE 966 Apt Elev 1000
--	------------------------	--

RNAV (GPS) RWY 35

STILLWATER RGNL (SWO)

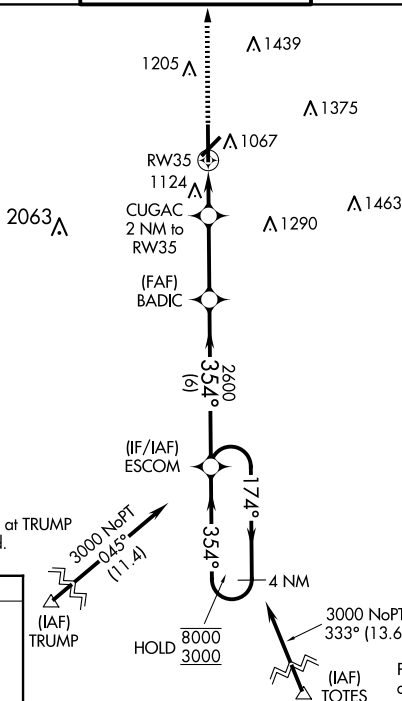
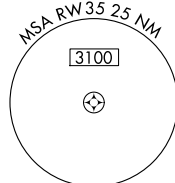
RNP APCH - GPS.

T Baro-VNAV and VDP NA when using Ponca City altimeter setting. For uncompensated Baro-VNAV systems, LNAV/VNAV NA below -16°C or above 54°C. When local altimeter setting not received, use Ponca City altimeter setting: increase LPV DA to 1246 feet and all visibilities $\frac{1}{8}$ SM. Increase LNAV/VNAV DA to 1336 feet and all visibilities $\frac{1}{4}$ SM. Increase all MDAs 80 feet and LNAV visibility Cats C/D $\frac{1}{4}$, and Circling visibility Cat D $\frac{1}{4}$ SM.

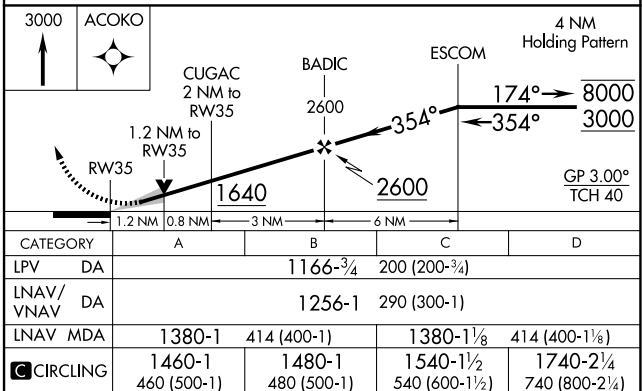
MISSED APPROACH:
Climb to 3000 direct
ACOKO and hold.

ASOS 135.725	KANSAS CITY CENTER 127.8 319.1	STILLWATER TOWER ★ 125.35 (CTAF) 0	GND CON 121.6	UNICOM 122.95
-----------------	-----------------------------------	---------------------------------------	------------------	------------------

MISSED APCH FIX



Procedure NA for arrivals at TRUMP
on V354 southwest bound.



STILLWATER, OKLAHOMA

Amdt 1C 19MAY22

STILLWATER REGION (SWO)

36°10'N-97°05'W

RNAV (GPS) RWY 35

SC-1, 07 AUG 2025 to 04 SEP 2025