

WAAS  
CH **90108**  
**W17A**

APP CRS  
**174°**

Rwy Idg **7401**  
TDZE **1000**  
Apt Elev **1000**

**RNAV (GPS) RWY 17**

STILLWATER RGNL (SWO)

RNP APCH - GPS.

▼

▲

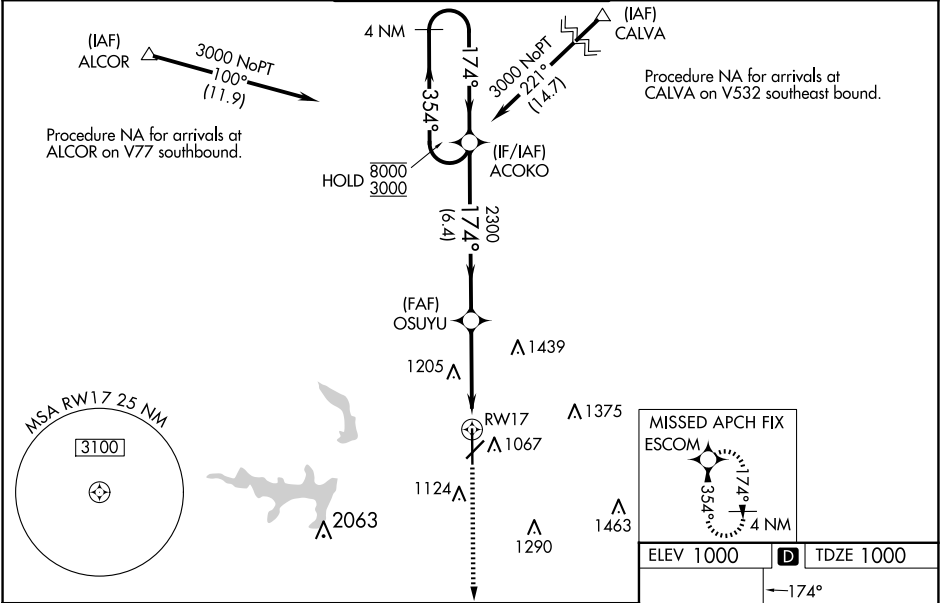
For uncompensated Baro-VNAV systems, LNAV/VNAV NA below -15°C or above 54°C. VDP and Baro-VNAV NA when using Ponca City altimeter setting. For inop ALS when using Ponca City altimeter setting, increase LPV visibility to ¾ SM, LNAV/VNAV visibility to 1 SM, and LNAV Cats C and D visibility to 1¾ SM. When local altimeter setting not received, use Ponca City altimeter setting: increase LPV DA to 1280 feet; increase LNAV/VNAV DA to 1359 feet and all visibilities ¾ SM; increase all MDA 80 feet and visibility LNAV Cats C and D ¼ SM and Circling Cat D ½ SM. For inop ALS, increase LNAV/VNAV visibility to ¾ SM.

MALSR

AS

MISSED APPROACH:  
Climb to 3000 direct  
ESCOM and hold.

ASOS <b>135,725</b>	KANSAS CITY CENTER <b>127.8 319.1</b>	STILLWATER TOWER ★ <b>125.35 (CTAF) 0</b>	GND CON <b>121.6</b>	UNICOM <b>122,95</b>
------------------------	------------------------------------------	----------------------------------------------	-------------------------	-------------------------



4 NM Holding Pattern

ACOKO

8000  
3000

←354°  
→174°

GP 3.00°  
TCH 48

2300

OSUYU

2300

\*1.2 NM to RW17

RW17

6.4 NM

2.7 NM

1.2 NM

3000

ESCOM

\*LNAV only.

CATEGORY	A	B	C	D
LPV DA		1200-½ 200 (200-½)		
LNAV/VNAV DA		1279-½ 279 (300-½)		
LNAV MDA	1440-½ 440 (500-½)		1440-¾ 440 (500-¾)	
CIRCLING	1440-1 440 (500-1)	1460-1 460 (500-1)	1520-1½ 520 (600-1½)	1740-2¼ 740 (800-2¼)

ELEV 1000

D

TDZE 1000

174°

Z1

AS

7401 X 100

5002 X 75

0.3% UP

0.5% UP

35

TWR 1018

REIL Rwy 35

MIRL Rwy 4-22 and 17-35