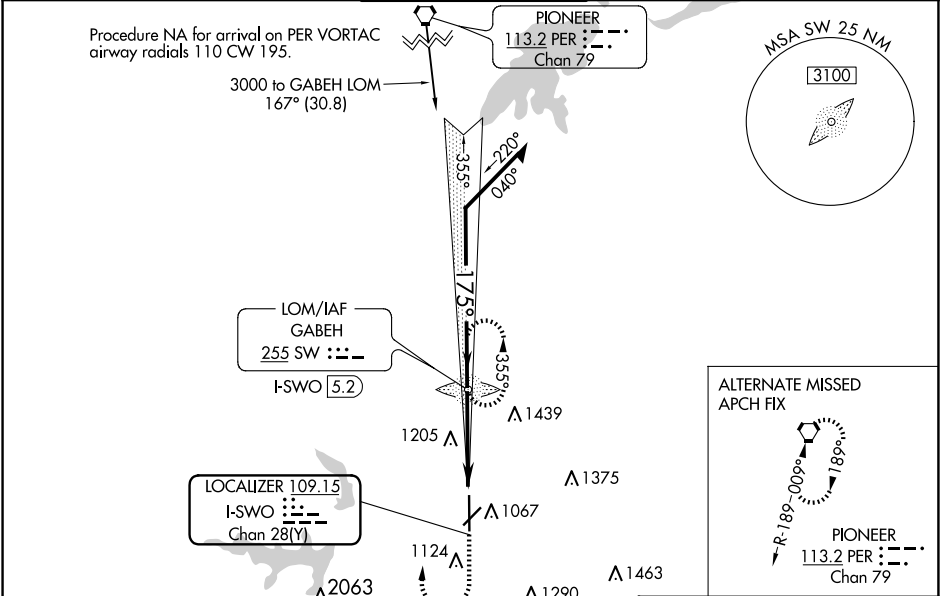


LOC/DME I-SWO 109.15 Chan 28 (Y)	APP CRS 175°	Rwy Idg TDZE Apt Elev	7401 1000 1000
--	------------------------	-----------------------------	---

ILS or LOC RWY 17
STILLWATER RGNL (SWO)

ADF required. VDP NA when using Ponca City altimeter setting. When local altimeter setting not received, use Ponca City altimeter setting and increase S-ILS 17 DA to 1280 feet; increase all MDAs 80 feet and S-LOC 17 visibility Cats C/D ½ SM, and increase Circling Cat C visibility ½ SM and Cat D visibility ½ SM. For inop ALS when using Ponca City altimeter setting, increase S-ILS 17 all Cats visibility to ¾ SM.	MALSR A5	MISSED APPROACH: Climb to 1500 then climbing right turn to 3200 direct GABEH LOM and hold, continue climb-in-hold to 3200.
--	-------------	---

ASOS 135.725	KANSAS CITY CENTER 127.8 319.1	STILLWATER TOWER ★ 125.35 (CTAF) 0	GND CON 121.6	UNICOM 122.95
------------------------	--	---	-------------------------	-------------------------



VGSI and ILS glidepath not coincident (VGSI Angle 3.00/TCH 50).					1500	3200	SW
Remain within 10 NM					GABEH LOM I-SWO 5.2		
GS 3.00° TCH 42					2600	2260	2300
					355°	175°	
					I-SWO 2.7	I-SWO 1.4	
					2.5 NM	1.3	
CATEGORY	A	B	C	D			
S-ILS 17	1200-½		200 (200-½)				
S-LOC 17	1460-½	460 (500-½)	1460-¾	460 (500-¾)			
CIRCLING	1460-1 460 (500-1)	1480-1 480 (500-1)	1540-1½ 540 (600-½)	1740-2¼ 740 (800-2¼)			

ELEV 1000	D	TDZE 1000			
174°					
A5					
7401 X 100					
5002 X 75					
0.5% UP					
TWR 1018					
35					
REIL Rwy 35					
MIRL Rwy 4-22 and 17-35					
FAF to MAP 3.8 NM					
Knots	60	90	120	150	180
Min:Sec	3:48	2:32	1:54	1:31	1:16

SC-1, 07 AUG 2025 to 04 SEP 2025

SC-1, 07 AUG 2025 to 04 SEP 2025