

WAAS CH <b>50525</b> <b>W36A</b>	APP CRS <b>357°</b>	Rwy Idg <b>5904</b> TDZE <b>3125</b> Apt Elev <b>3125</b>
--	------------------------	---

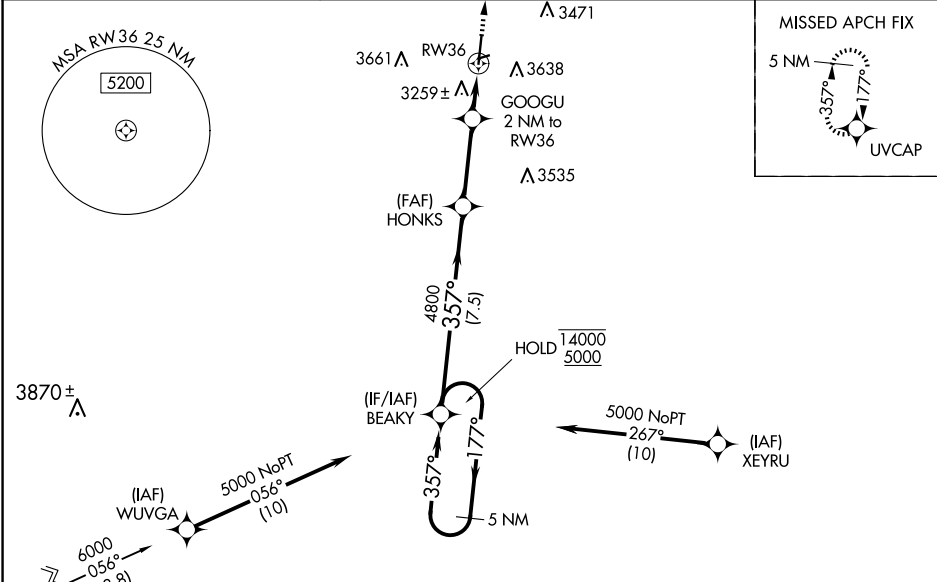
RNAV (GPS) RWY 36  
GUYMON MUNI (GUY)

RNP APCH - GPS.

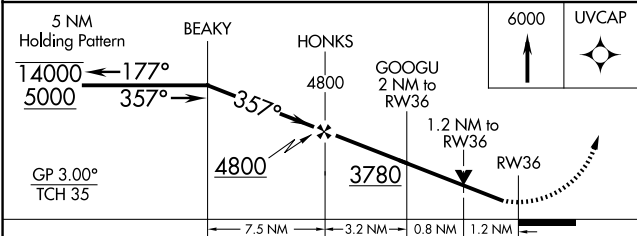
**⚠** Circling NA east of Rwy 18-36. Baro-VNAV and VDP NA when using Liberal altimeter setting.  
**⚠** Rwy 36 helicopter visibility reduction below ¼ SM NA. For uncompensated Baro-VNAV systems, LNAV/VNAV NA below -21°C or above 54°C. When local altimeter setting not received, use Liberal altimeter setting: increase LPV DA to 3487 feet; LNAV/VNAV DA to 3696 feet and all visibilities ¼ SM; increase all MDAs 120 feet and visibility LNAV Cat C ¼ SM, and Circling Cat C ½ SM. Circling NA to Rwy 6 and 24.

**MISSED APPROACH:**  
Climb to 6000 direct UVCAP and hold.

ASOS <b>119.925</b>	KANSAS CITY CENTER <b>134.0 257.625</b>	UNICOM <b>122.7 (CTAF)</b> <b>📻</b>
------------------------	--	--



Procedure NA for arrival on DHT VORTAC airway radials 071 CW 129 and arrivals at DHT VORTAC on T420 northwest bound.



CATEGORY	A	B	C	D
LPV DA	3375-3/4 250 (300-3/4)			NA
LNAV/VNAV DA	3584-13/8 459 (500-13/8)			NA
LNAV MDA	3520-1	395 (400-1)	3520-11/8 395 (400-11/8)	NA
<b>🌀</b> CIRCLING	3580-1 455 (500-1)	3600-1 475 (500-1)	3980-21/2 855 (900-21/2)	NA

