

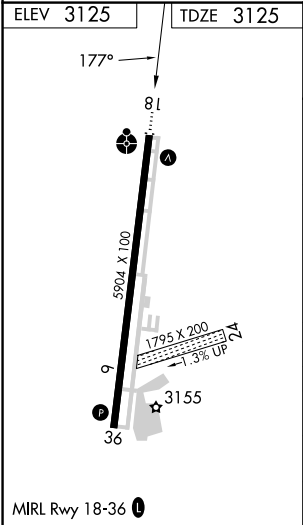
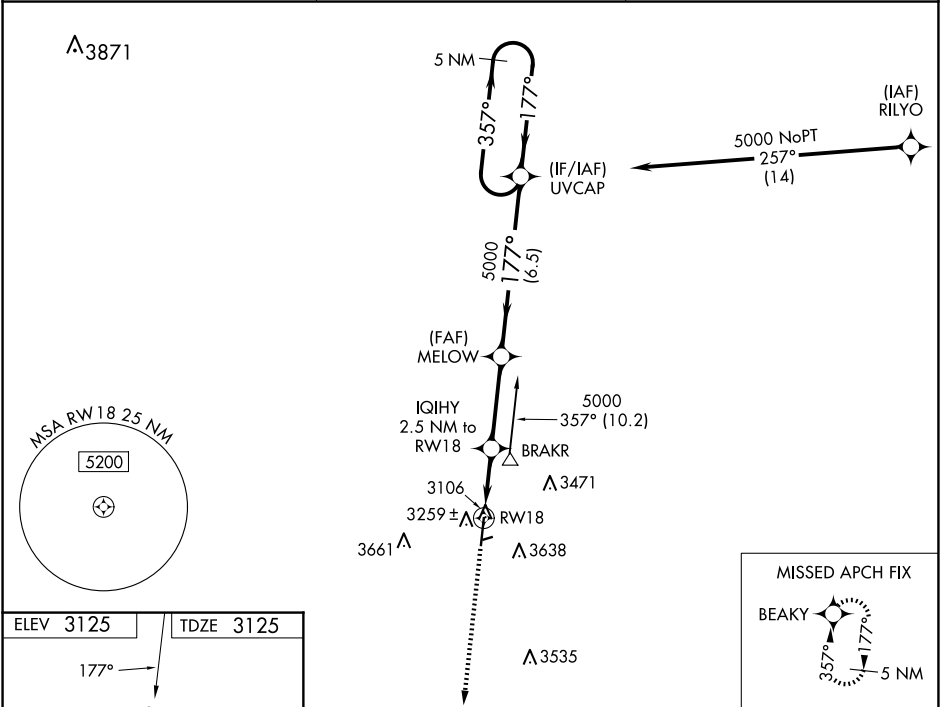
WAAS CH <b>82625</b> <b>W18A</b>	APP CRS <b>177°</b>	Rwy Idg <b>5904</b> TDZE <b>3125</b> Apt Elev <b>3125</b>	<b>RNAV (GPS) RWY 18</b> GUYMON MUNI (GUY)
--	------------------------	---	---

**⚠** Baro-VNAV NA when using Liberal altimeter setting. For uncompensated Baro-VNAV systems, LNAV/VNAV NA below -21°C (-5°F) or above 54°C (130°F). Circling NA east of Rwy 18-36. DME/DME RNP-0.3 NA. When local altimeter setting not received, use Liberal altimeter setting: Increase LPV DA to 3488 feet; increase LNAV/VNAV DA to 3564 feet and all visibilities ½ SM; increase all MDAs 120 feet and visibility Cat C ½ SM. Circling NA to Rwy 6 and 24.

ODALS

**MISSED APPROACH:**  
Climb to 6000 direct  
BEAKY and hold.

ASOS <b>119.925</b>	KANSAS CITY CENTER <b>134.0 257.625</b>	UNICOM <b>122.7 (CTAF) 0</b>
------------------------	--	---------------------------------



6000 ↑		BEAKY 		VGSI and RNAV glidepath not coincident (VGSI Angle 3.00/TCH 25).			
*LNAV only		MELOW 5000		UVCAP		5 NM Holding Pattern	
IQIHY 2.5 NM to RW18		177°		357°		5000	
RW18		*3940		5000		GP 3.00° TCH 45	
→ 2.5 NM		→ 3.3 NM		→ 6.5 NM			
CATEGORY		A		B		C	
LPV DA		3375-1		250 (300-1)		NA	
LNAV/ VNAV DA		3451-1		326 (400-1)		NA	
LNAV MDA		3520-1		395 (400-1)		NA	
CIRCLING		3580-1		455 (500-1)		3980-2½ 855 (900-2½)	

SC-1, 07 AUG 2025 to 04 SEP 2025

SC-1, 07 AUG 2025 to 04 SEP 2025