

WAAS CH 70412 W36A	APP CRS 357°	Rwy ldg 6103 TDZE 995 Apt Elev 1016
--	------------------------	--

RNAV (GPS) RWY 36

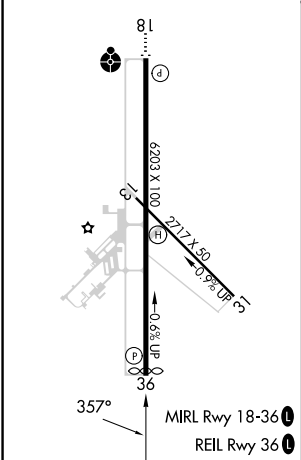
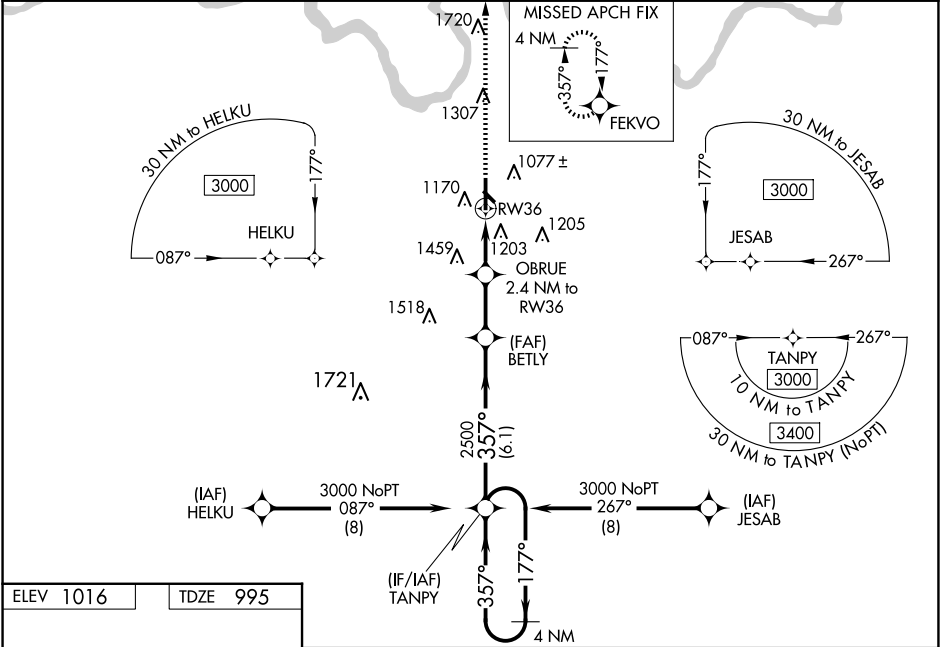
ADA RGNL (ADH)

⚠ For uncompensated Baro-VNAV systems, LNAV/VNAV NA below -17°C (2°F) or above 54°C (130°F). Baro-VNAV and VDP NA when using Seminole altimeter setting.

⚠ Circling Rwy 31 NA at night. Rwy 36 helicopter visibility reduction below ¾ SM NA. DME/DME RNP-0.3 NA. When local altimeter setting not received, use Seminole altimeter setting: increase LPV DA to 1311 feet, LNAV/VNAV DA to 1600 feet and all MDA 80 feet. Increase LPV all Cats and LNAV Cats C and D visibility ¼ SM, increase LNAV/VNAV all Cats visibility to 2 ½ SM. Increase Circling Cats C/D visibility ½ SM.

MISSED APPROACH: Climb to 3000
direct FEKVO and hold.

AWOS-3PT 118.725	FORT WORTH CENTER 132.2 338.35	UNICOM 122.8 (CTAF) 0
----------------------------	--	---------------------------------



3000 ↑ FEKVO		VGSI and RNAV glidepath not coincident (VGSI Angle 3.00/TCH 43).		
*LNAV only.		TANPY 4 NM Holding Pattern		
OBRUE 2.4 NM to RW36		177° → 3000 ← 357°		
1.4 NM to RW36		357°		
RW36		2500		
1.4 NM		GP 3.00° TCH 35		
1.0		2500		
2.3 NM		6.1 NM		
CATEGORY	A	B	C	D
LPV DA	1245-7/8		250 (300-7/8)	
LNAV/ VNAV DA	1534-17/8		539 (600-17/8)	
LNAV MDA	1460-1 465 (500-1)		1460-13/8 465 (500-13/8)	
CIRCLING	1520-1 504 (600-1)	1640-1 624 (700-1)	1820-2 1/4 804 (900-2 1/4)	1820-2 1/2 804 (900-2 1/2)