

| | | |
|--|------------------------|---|
| WAAS CH 61012 W18A | APP CRS 177° | Rwy Idg 6203 TDZE 1016 Apt Elev 1016 |
|--|------------------------|---|

RNAV (GPS) RWY 18
ADARRGNL (ADH)

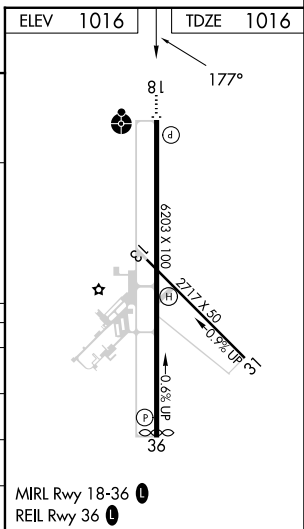
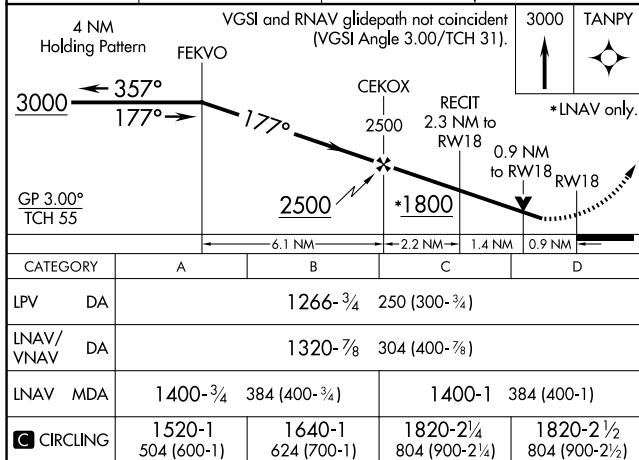
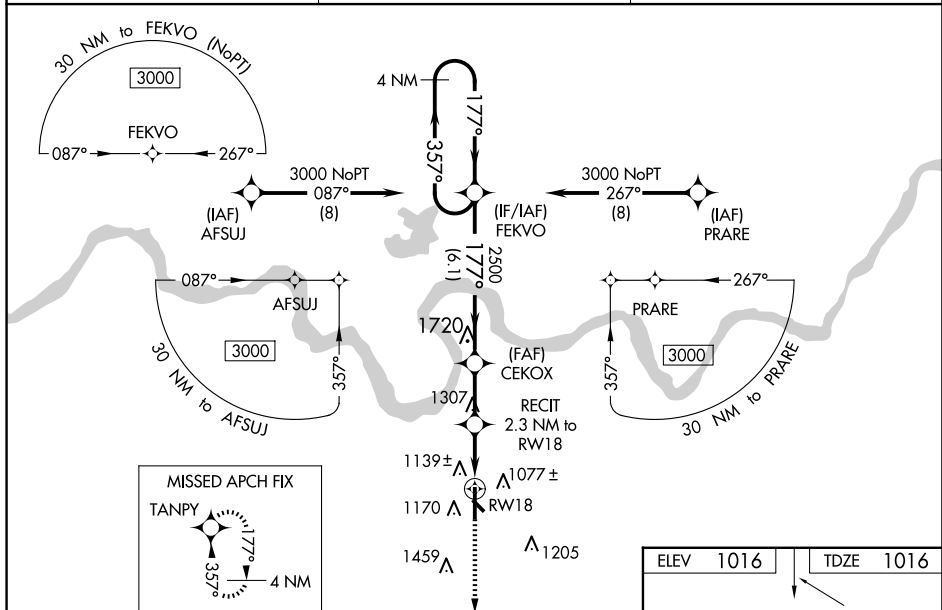
ADAR GNI (ADH)

▼ Inop table does not apply to LPV. For uncompensated Baro-VNAV systems, LNAV/VNAV NA below -17°C (2°F) or above 54°C (130°F). Baro-VNAV and VDP NA when using Seminole altimeter setting. Circling Rwy 31 NA at night. Rwy 18 helicopter visibility reduction below ¼ SM NA. DME/DME RNP-0.3 NA. For inop ALS, increase LNAV/VNAV Cats A and B visibility ½ SM. For inop ALS when using Seminole altimeter setting; increase LPV all Cats visibility to 1 SM and LNAV/VNAV all Cats to 1¼ SM. When local altimeter setting not received, use Seminole altimeter setting; increase LPV DA to 1332 feet, LNAV/VNAV DA to 1386 and all MDA 80 feet. Increase LPV all Cats visibility ½ SM, increase LNAV/VNAV all Cats and LNAV Cat C and D visibility ¼ SM. Increase Circling Cats C/D visibility ½ SM.

ODALS

MISSED APPROACH:
Climb to 3000 direct
TANPY and hold.

| | | |
|----------------------------|--|--|
| AWOS-3PT 118.725 | FORT WORTH CENTER 132.2 338.35 | UNICOM 122.8 (CTAF) 0 |
|----------------------------|--|--|



RNAV (GPS) RWY 18