

WAAS
CH **90107**
W27A

APP CRS
273°

Rwy Idg
TDZE **1184**
Apt Elev **1184**

RNAV (GPS) RWY 27
WASHINGTON COUNTY (AFJ)

RNP APCH-GPS.

▼

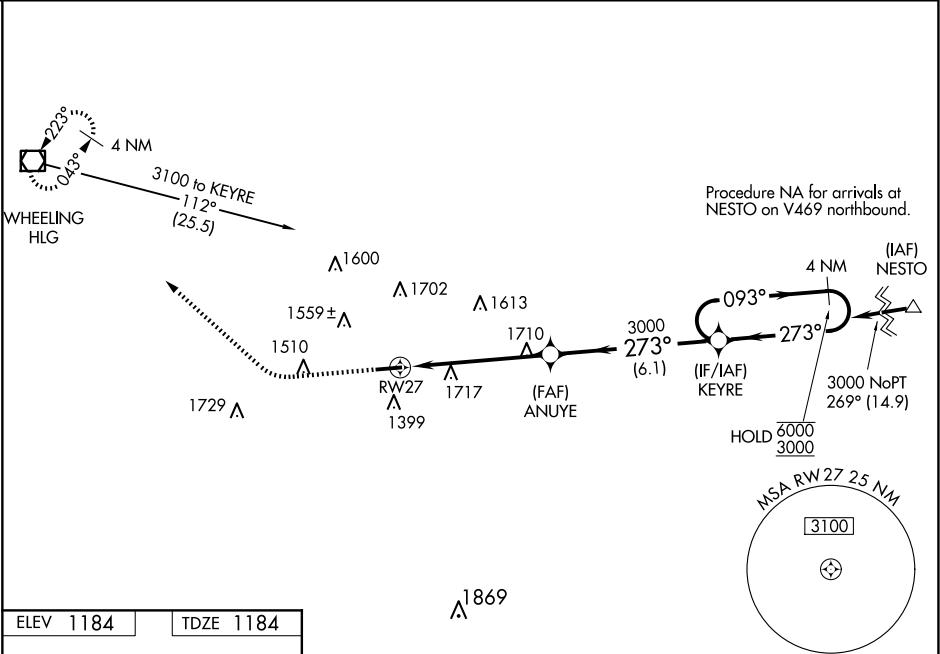
Circling NA for Cat D N of Rwy 9-27. Rwy 27 helicopter visibility reduction below $\frac{3}{4}$ SM NA.

▲

For uncompensated Baro-VNAV systems, LNAV/VNAV NA below -17°C or above 54°C. Circling Rwy 9 NA at night.

MISSED APPROACH: Climb to 1700 then climbing right turn to 3300 direct HLG VOR/DME and hold.

AWOS-3PT 119.175	PITTSBURGH APP CON 119.35 285.575	CLNC DEL 127.3	UNICOM 122.975 (CTAF) 0
----------------------------	---	--------------------------	-----------------------------------



ELEV 1184	TDZE 1184
------------------	------------------

1700

3300

HLG

VGSI and RNAV glidepath not coincident (VGSI Angle 3.09/TCH 62).

4 NM Holding Pattern

ANUYE

KEYRE

3000

273°

093°

6000

3000

2.3 NM to RW27

2.3 NM

3.1 NM

6.1 NM

GP 3.09° TCH 57

CATEGORY	A	B	C	D
LPV DA		1386- $\frac{3}{4}$	202 (300- $\frac{3}{4}$)	
LNAV/VNAV DA		2140-4	956 (1000-4)	
LNAV MDA	1980-1 796 (800-1)	1980-1 $\frac{1}{4}$ 796 (800-1 $\frac{1}{4}$)	1980-2 $\frac{1}{2}$ 796 (800-2 $\frac{1}{2}$)	796 (800-2 $\frac{1}{2}$)
C CIRCLING	1980-1 796 (800-1)	2020-1 $\frac{1}{4}$ 836 (900-1 $\frac{1}{4}$)	2020-2 $\frac{1}{2}$ 836 (900-2 $\frac{1}{2}$)	2040-2 $\frac{3}{4}$ 856 (900-2 $\frac{3}{4}$)