

LOC/DME I-AFJ

110.3

Chan 40

APP CRS

273°

Rwy Idg

5004

TDZE

1184

Apt Elev

1184

ILS or LOC RWY 27

WASHINGTON COUNTY (AFJ)

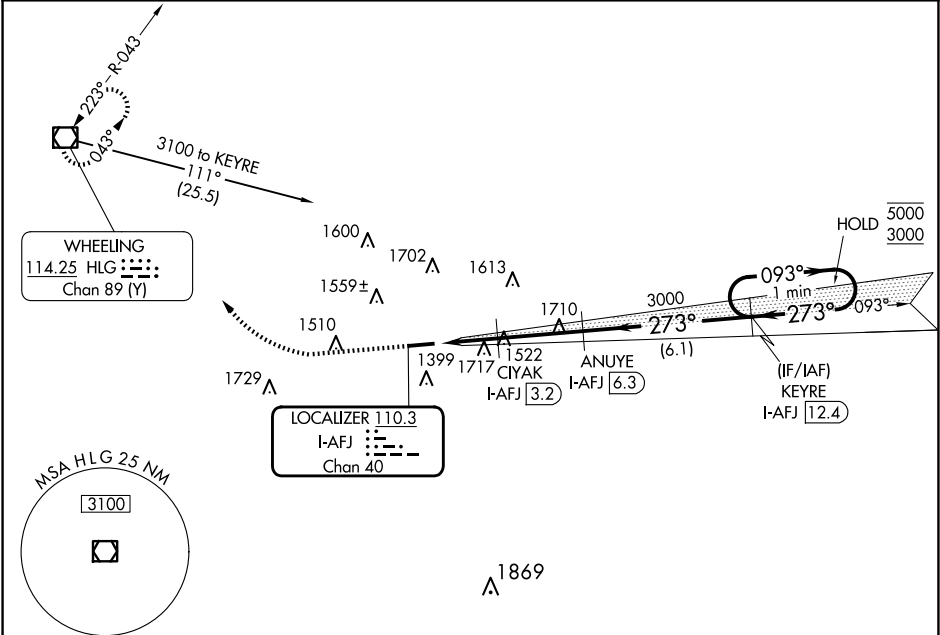
DME required. RADAR required for procedure entry.

NA

Circling NA for Cat D N of Rwy 9-27. Rwy 27 helicopter visibility reduction below $\frac{3}{4}$ NA. Circling Rwy 9 NA at night.

MISSED APPROACH: Climb to 1700 then climbing right turn to 3300 direct HLG VOR/DME and hold.

AWOS-3PT 119.175	PITTSBURGH APP CON 119.35 285.575	CLNC DEL 127.3	UNICOM 122.975 (CTAF) 0
---------------------	--------------------------------------	-------------------	----------------------------



ELEV 1184

TDZE 1184

1700 3300 HLG

VGSI and ILS glidepath not coincident (VGSI Angle 3.09°/TCH 62).

5004 X 100

273°

ANUYE I-AFJ 6.3

KEYRE I-AFJ 12.4

One Minute Holding Pattern

5000 3000

GS 3.09° TCH 57

1.7 NM 0.6 NM 3.1 NM 6.1 NM

CATEGORY	A	B	C	D
S-ILS 27	1386- $\frac{3}{4}$ 202 (300- $\frac{3}{4}$)			
S-LOC 27	1780-1	596 (600-1)	1780-1 $\frac{3}{4}$	596 (600-1 $\frac{3}{4}$)
CIRCLING	1800-1 616 (700-1)	2020-1 $\frac{1}{4}$ 836 (900-1 $\frac{1}{4}$)	2020-2 $\frac{1}{2}$ 836 (900-2 $\frac{1}{2}$)	2040-2 $\frac{3}{4}$ 856 (900-2 $\frac{3}{4}$)