

WAAS CH 82638 W20A	APP CRS 200°	Rwy Idg TDZE Apt Elev	6000 309 311
--	------------------------	-----------------------------	---

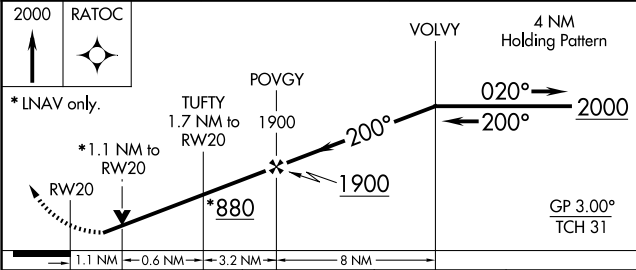
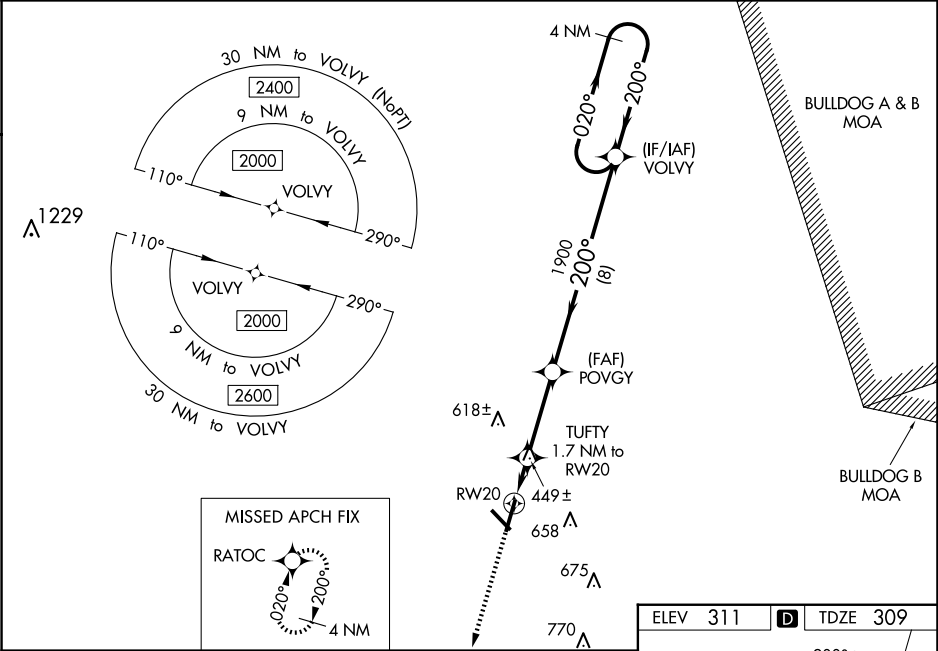
RNAV (GPS) RWY 20

W H 'BUD' BARRON (DBN)

▼ Night landing: Rwy 32 NA. For uncompensated Baro-VNAV systems, LNAV/VNAV NA below -15°C (5°F) or above 54°C (130°F). Baro-VNAV and VDP NA when using Vidalia altimeter setting.
▲ DME/DME RNP-0.3 NA. Helicopter visibility reduction below ¾ SM NA. When local altimeter setting not received, use Vidalia altimeter setting; increase LPV DA to 681 feet and LNAV/VNAV DA to 693 feet and all MDA 100 feet; increase LPV all Cats visibility ¼ mile and LNAV/VNAV all Cats visibility ⅓ mile and LNAV Cat C/D and Circling Cat C/D visibility ¼ mile.

MISSED APPROACH:
Climb to 2000 direct
RATOC and hold.

AWOS-3 118.425	ATLANTA APP CON ★ 124.2 279.6	UNICOM 122.7 (CTAF) 0
--------------------------	---	---------------------------------



CATEGORY	A	B	C	D
LPV DA	587-1	278 (300-1)		
LNAV/VNAV DA	688-1	379 (400-1)		
LNAV MDA	700-1	391 (400-1)	700-1½	391 (400-1½)
CIRCLING	760-1 449 (500-1)	780-1 469 (500-1)	1020-2 709 (800-2)	1020-2¼ 709 (800-2¼)

