

LOC/DME I-DBN 109.1 Chan 28	APP CRS 020°	Rwy Idg 6300 TDZE 299 Apt Elev 311
---	------------------------	---

ILS or LOC RWY 2

W H 'BUD' BARRON (DBN)

DME required.

T Circling Rwy 32 NA at night.
A For inop ALS, increase S-LOC 2 Cats C/D visibility to 1 $\frac{3}{8}$ SM.

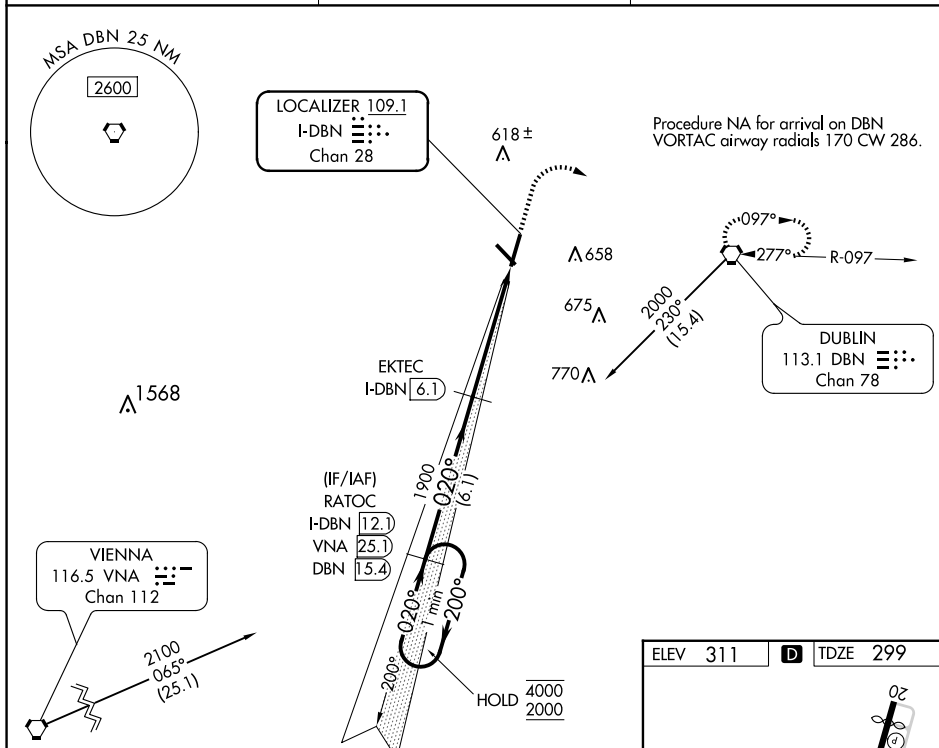
MALSR



MISSED APPROACH: Climb to 1000 then climbing right turn to 2000 direct DBN VORTAC and hold.

AWOS-3
118.425

ATLANTA APP CON ★
124.2 279.6

UNICOM
122.7 (CTAF) **L**

One Minute Holding Pattern

VGS and ILS glidepath not coincident (VGS Angle 3.00/TCH 31).

1000 2000 DBN

4000 ← 200°
2000 → 020°

020°

1900

1900

6.1 NM 3.6 NM 1.4 NM


GS 3.00°
TCH 42

RATOC I-DBN [12.1]

EKTEC I-DBN [6.1]

I-DBN [2.5]

I-DBN [1.2]

CATEGORY	A	B	C	D
S-ILS 2	499- $\frac{1}{2}$ 200 (200- $\frac{1}{2}$)			
S-LOC 2	760- $\frac{1}{2}$ 461 (500- $\frac{1}{2}$)		760-1 461 (500-1)	
 CIRCLING	760-1 449 (500-1)	780-1 469 (500-1)	940-1 $\frac{3}{4}$ 629 (700-1 $\frac{3}{4}$)	980-2 669 (700-2)

