

WAAS CH 73014 W03A	APP CRS 034°	Rwy Idg 5999 TDZE 624 Apt Elev 625
--	------------------------	---

RNAV (GPS) RWY 3
MENOMINEE RGNL (MNM)

RNP APCH - GPS.

A Baro-VNAV and VDP NA when using SUE altimeter setting. Circling Rwy 14, 32 NA at night. For uncompensated Baro-VNAV systems, LNAV/VNAV NA below -16°C or above 54°C. Rwy 3 helicopter visibility reduction below $\frac{3}{4}$ SM NA. Inop table does not apply to LPV and LNAV all Cats. When local altimeter setting not received, use SUE altimeter setting: increase LPV DA to 959 feet; increase LNAV/VNAV DA to 1209 feet and all visibilities $\frac{1}{4}$ SM; increase all MDAs 60 feet and Circling visibility Cts C and D $\frac{1}{4}$ SM. For inop ALS when using SUE altimeter setting increase LNAV MDA visibility Cts C and D to $1\frac{1}{4}$ SM. Inop table does not apply to LPV all Cts and LNAV Cts A and B when using SUE altimeter setting.

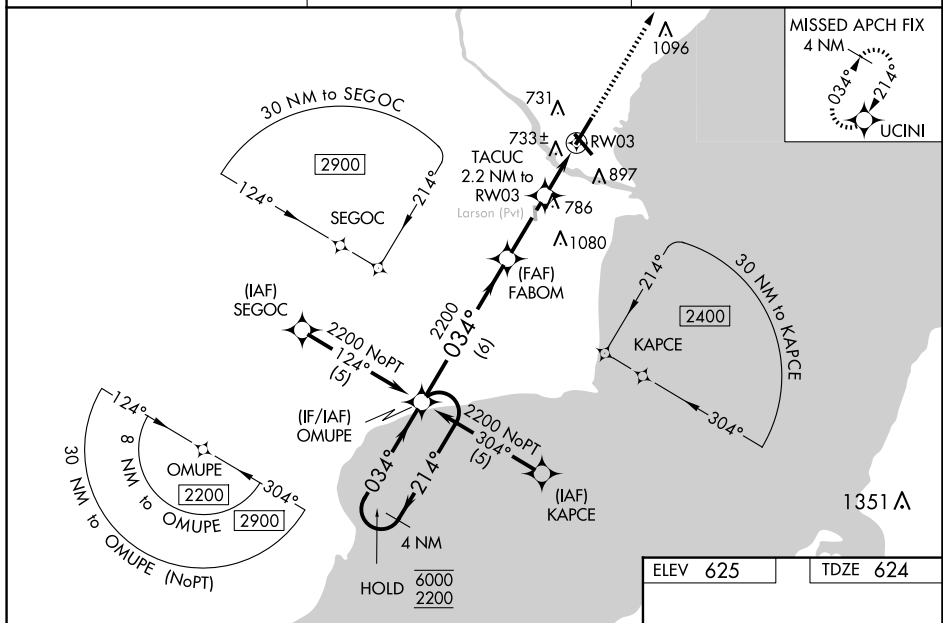
MALS®

A5

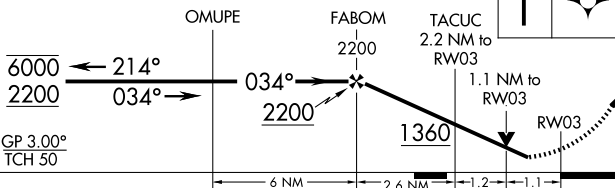
MISSED APPROACH:
Climb to 2300 direct
UCINI and hold.


AWOS-3PT
121.45

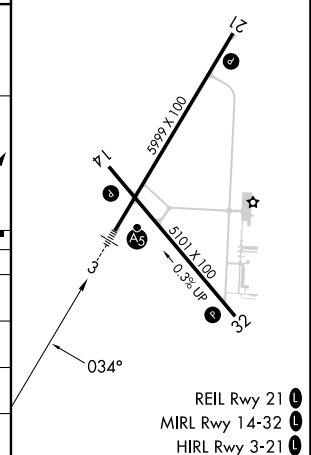
GREEN BAY APP CON ★
120.3 338.2

UNICOM
122.8 (CTAF) **L**

4 NM
Holding Pattern



CATEGORY	A	B	C	D
LPV DA	900-1 276 (300-1)			
LNAV/VNAV DA	1150-1 526 (600-1)			
LNAV MDA	1000-1 376 (400-1)			
 CIRCLING	1200-1 575 (600-1)		1200-1½ 575 (600-1½)	1380-2½ 755 (800-2½)



MENOMINEE, MICHIGAN
Orig-B 17APR25

45°08'N - 87°38'W

MENOMINEE RGNL (MNM)
RNAV (GPS) RWY 3

REIL Rwy 21 **L**
MIRL Rwy 14-32 **L**
HIRL Rwy 3-21 **L**