

APP CRS
214°

Rwy Idg
TDZE
Apt Elev

5999
625
625

RNAV (GPS) RWY 21

MENOMINEE RGNL (MNM)

RNP APCH.

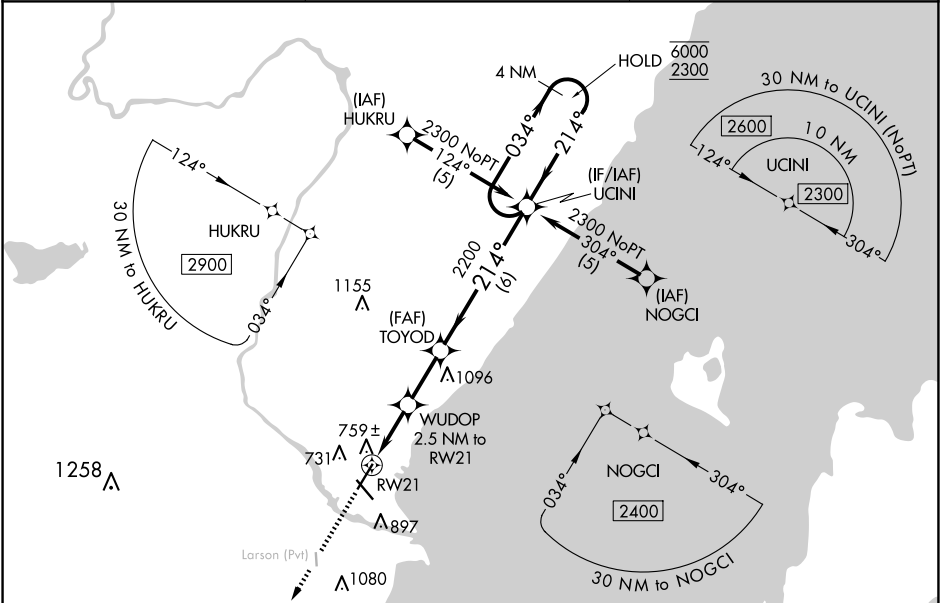
▼

⚠

Circling Rwy 14, 32 NA at night. Rwy 21 helicopter visibility reduction below ¾ SM NA. VDP NA when using Sturgeon Bay altimeter setting. When local altimeter setting not received, use Sturgeon Bay altimeter setting and increase all MDA 60 feet, increase LNAV Cat C/D and Circling Cat C/D visibility ¼ SM.

MISSED APPROACH:
Climb to 2200 direct OMUPE and hold.

AWOS-3PT 121.45	GREEN BAY APP CON ★ 120.3 338.2	UNICOM 122.8 (CTAF) 0
--------------------	------------------------------------	--------------------------



ELEV 625 TDZE 625

214°

1214

5999 X 100

5101 X 100

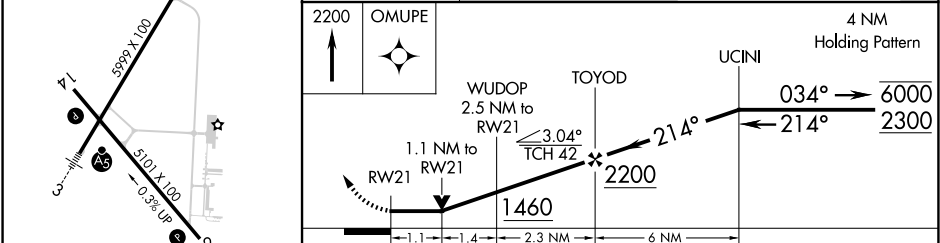
0.5% UP

MISSED APCH FIX
OMUPE

2200

OMUPE

4 NM



CATEGORY	A	B	C	D
LNAV MDA	1020-1	395 (400-1)	1020-1½	395 (400-1½)
CIRCLING	1200-1	575 (600-1)	1200-1½	1380-2½

EC-1, 07 AUG 2025 to 04 SEP 2025

EC-1, 07 AUG 2025 to 04 SEP 2025