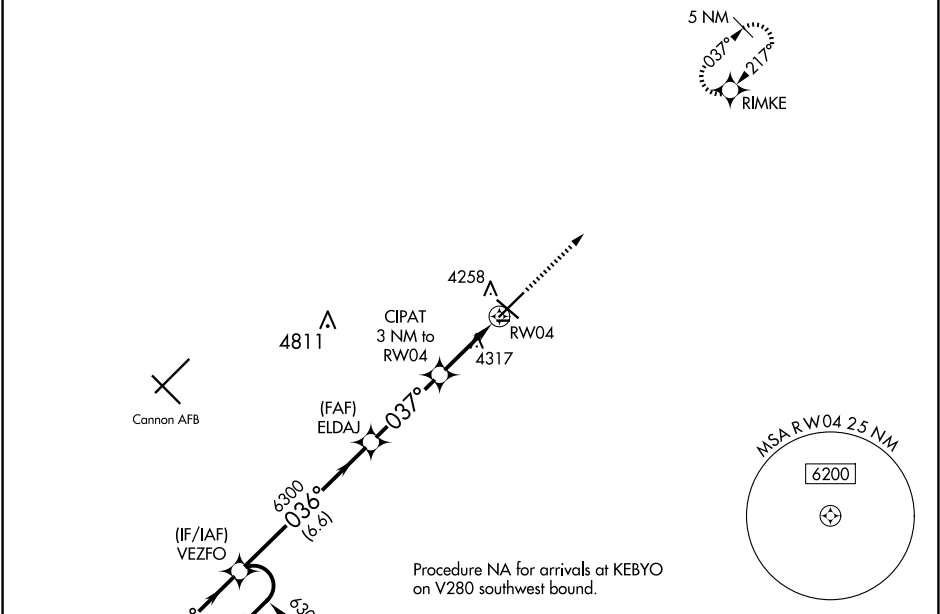


WAAS CH <b>97300</b> <b>W04A</b>	APP CRS <b>037°</b>	Rwy Ldg TDZE Apt Elev	<b>7200</b> <b>4205</b> <b>4216</b>
--	------------------------	-----------------------------	---

RNAV (GPS) RWY 4

CLOVIS RGNL (CVN)

RNP APCH - GPS.		MALSR	MISSED APPROACH: Climb to 6000 direct RIMKE and hold.
⚠ For uncompensated Baro-VNAV systems, LNAV/VNAV NA below -23°C or above 49°C. For inop ALS, increase LNAV/VNAV all Cats visibility to ¾ SM. Circling NA to Rwy 8 and 26.		⚠	
AWOS-3PT <b>135.375</b>	CANNON APP CON <b>118.425 352.1</b>	CLNC DEL <b>119.0</b>	UNICOM <b>122.8 (CTAF) 0</b>



7 NM Holding Pattern		ELEV 4216		TDZE 4205	
		6000		RIMKE	
GP 3.00° TCH 53		6300		5200	
6.6 NM		3.4 NM		1.8 NM	
1.2 NM		1.2 NM		1.2 NM	
CATEGORY	A	B	C	D	
LPV DA		4405-½	200 (200-½)		
LNAV/VNAV DA		4455-½	250 (300-½)		
LNAV MDA	4640-½	435 (500-½)	4640-¾	435 (500-¾)	
CIRCLING	4680-1	464 (500-1)	4700-1½ 484 (500-1½)	4820-2 604 (700-2)	

REIL Rwy 12 and 30 0

MIRL Rwy 4-22 and 12-30 0