

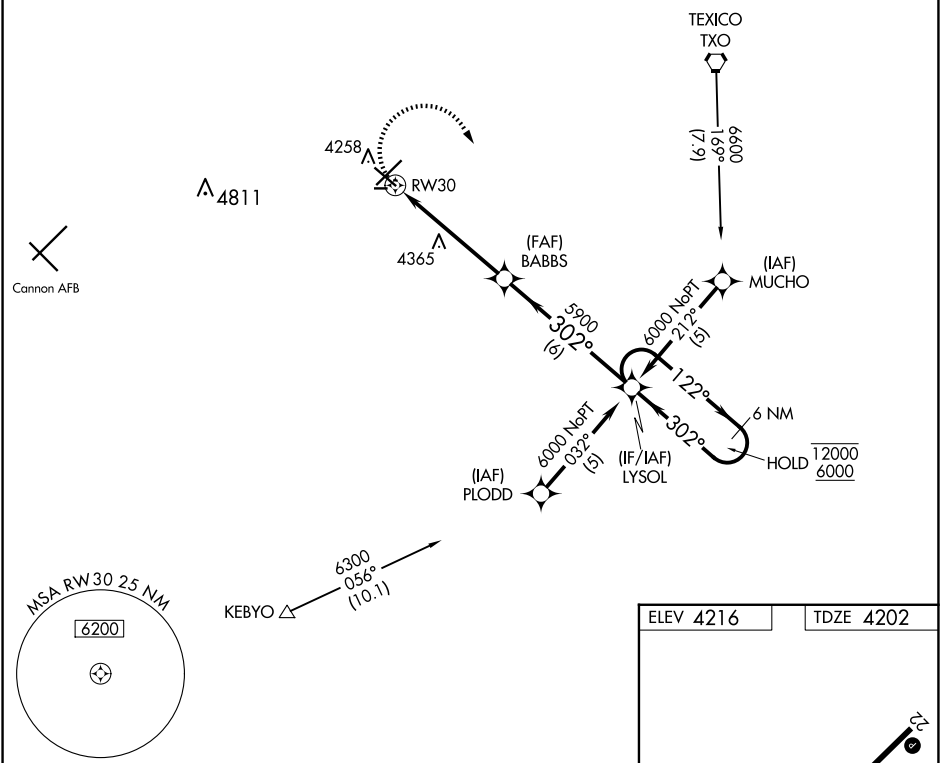
APP CRS	Rwy Ldg	5697
302°	TDZE	4202
	Apt Elev	4216




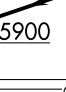

RNAV (GPS) RWY 30

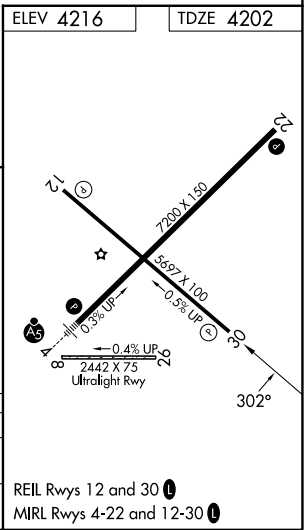
CLOVIS RGNL (CVN)

RNP APCH - GPS.		MISSED APPROACH: Climbing right turn to 6000 direct LYSOL and hold.	
CAUTION: Cannon AFB 12 NM WSW, heavy USAF fighter traffic. Circling NA to Rwys 8 and 26.			
AWOS-3PT 135.375	CANNON APP CON 118.425 352.1	CLNC DEL 119.0	UNICOM 122.8 (CTAF) 0

Procedure NA for arrivals at TXO VORTAC via V62 northwest bound.



				VGSI and descent angles not coincident (VGSI Angle 4.00/TCH 63)	
					
1.1 NM to RW30		BABBS		LYSOL	
1.1 NM		4 NM		6 NM	
1.1 NM		4 NM		6 NM	
1.1 NM		4 NM		6 NM	
1.1 NM		4 NM		6 NM	
1.1 NM		4 NM		6 NM	
1.1 NM		4 NM		6 NM	
1.1 NM		4 NM		6 NM	
1.1 NM		4 NM		6 NM	
1.1 NM		4 NM		6 NM	
1.1 NM		4 NM		6 NM	
1.1 NM		4 NM		6 NM	
1.1 NM		4 NM		6 NM	
1.1 NM		4 NM		6 NM	
1.1 NM		4 NM		6 NM	
1.1 NM		4 NM		6 NM	
1.1 NM		4 NM		6 NM	
1.1 NM		4 NM		6 NM	
1.1 NM		4 NM		6 NM	
1.1 NM		4 NM		6 NM	
1.1 NM		4 NM		6 NM	
1.1 NM		4 NM		6 NM	
1.1 NM		4 NM		6 NM	
1.1 NM		4 NM		6 NM	
1.1 NM		4 NM		6 NM	
1.1 NM		4 NM		6 NM	
1.1 NM		4 NM		6 NM	
1.1 NM		4 NM		6 NM	
1.1 NM		4 NM		6 NM	
1.1 NM		4 NM		6 NM	
1.1 NM		4 NM		6 NM	
1.1 NM		4 NM		6 NM	
1.1 NM		4 NM		6 NM	
1.1 NM		4 NM		6 NM	
1.1 NM		4 NM		6 NM	
1.1 NM		4 NM		6 NM	
1.1 NM		4 NM		6 NM	
1.1 NM		4 NM		6 NM	
1.1 NM		4 NM		6 NM	
1.1 NM		4 NM		6 NM	
1.1 NM		4 NM		6 NM	
1.1 NM		4 NM		6 NM	
1.1 NM		4 NM		6 NM	
1.1 NM		4 NM		6 NM	
1.1 NM		4 NM		6 NM	
1.1 NM		4 NM		6 NM	
1.1 NM		4 NM		6 NM	
1.1 NM		4 NM		6 NM	
1.1 NM		4 NM		6 NM	
1.1 NM		4 NM		6 NM	
1.1 NM		4 NM		6 NM	
1.1 NM		4 NM		6 NM	
1.1 NM		4 NM		6 NM	
1.1 NM		4 NM		6 NM	
1.1 NM		4 NM		6 NM	
1.1 NM		4 NM		6 NM	
1.1 NM		4 NM		6 NM	
1.1 NM		4 NM		6 NM	
1.1 NM		4 NM		6 NM	
1.1 NM		4 NM		6 NM	
1.1 NM		4 NM		6 NM	
1.1 NM		4 NM		6 NM	
1.1 NM		4 NM		6 NM	
1.1 NM		4 NM		6 NM	
1.1 NM		4 NM		6 NM	
1.1 NM		4 NM		6 NM	
1.1 NM		4 NM		6 NM	
1.1 NM		4 NM		6 NM	
1.1 NM		4 NM		6 NM	
1.1 NM		4 NM		6 NM	
1.1 NM		4 NM		6 NM	
1.1 NM		4 NM		6 NM	
1.1 NM		4 NM		6 NM	
1.1 NM		4 NM		6 NM	
1.1 NM		4 NM		6 NM	
1.1 NM		4 NM		6 NM	
1.1 NM		4 NM		6 NM	
1.1 NM		4 NM		6 NM	
1.1 NM		4 NM		6 NM	
1.1 NM		4 NM		6 NM	
1.1 NM		4 NM		6 NM	
1.1 NM		4 NM		6 NM	
1.1 NM		4 NM		6 NM	
1.1 NM		4 NM		6 NM	
1.1 NM		4 NM		6 NM	
1.1 NM		4 NM		6 NM	
1.1 NM		4 NM		6 NM	
1.1 NM		4 NM		6 NM	
1.1 NM		4 NM		6 NM	
1.1 NM		4 NM		6 NM	
1.1 NM		4 NM		6 NM	
1.1 NM		4 NM		6 NM	
1.1 NM		4 NM		6 NM	
1.1 NM		4 NM		6 NM	
1.1 NM		4 NM		6 NM	
1.1 NM		4 NM		6 NM	
1.1 NM		4 NM		6 NM	
1.1 NM		4 NM		6 NM	
1.1 NM		4 NM		6 NM	
1.1 NM		4 NM		6 NM	
1.1 NM		4 NM		6 NM	
1.1 NM		4 NM		6 NM	
1.1 NM		4 NM		6 NM	
1.1 NM		4 NM		6 NM	
1.1 NM		4 NM		6 NM	
1.1 NM		4 NM		6 NM	
1.1 NM		4 NM		6 NM	
1.1 NM		4 NM		6 NM	
1.1 NM		4 NM		6 NM	
1.1 NM		4 NM		6 NM	
1.1 NM		4 NM		6 NM	
1.1 NM		4 NM		6 NM	
1.1 NM		4 NM		6 NM	
1.1 NM		4 NM		6 NM	
1.1 NM		4 NM		6 NM	
1.1 NM		4 NM		6 NM	
1.1 NM		4 NM		6 NM	
1.1 NM		4 NM		6 NM	
1.1 NM		4 NM		6 NM	
1.1 NM		4 NM		6 NM	
1.1 NM		4 NM		6 NM	
1.1 NM		4 NM		6 NM	
1.1 NM		4 NM		6 NM	
1.1 NM		4 NM		6 NM	
1.1 NM		4 NM		6 NM	
1.1 NM		4 NM		6 NM	
1.1 NM		4 NM		6 NM	
1.1 NM		4 NM		6 NM	
1.1 NM		4 NM		6 NM	
1.1 NM		4 NM		6 NM	
1.1 NM		4 NM		6 NM	
1.1 NM		4 NM		6 NM	
1.1 NM		4 NM		6 NM	
1.1 NM		4 NM		6 NM	
1.1 NM		4 NM		6 NM	
1.1 NM		4 NM		6 NM	
1.1 NM		4 NM		6 NM	
1.1 NM		4 NM		6 NM	
1.1 NM		4 NM		6 NM	
1.1 NM		4 NM		6 NM	
1.1 NM		4 NM		6 NM	
1.1 NM		4 NM		6 NM	



SW-1, 07 AUG 2025 to 04 SEP 2025

SW-1, 07 AUG 2025 to 04 SEP 2025