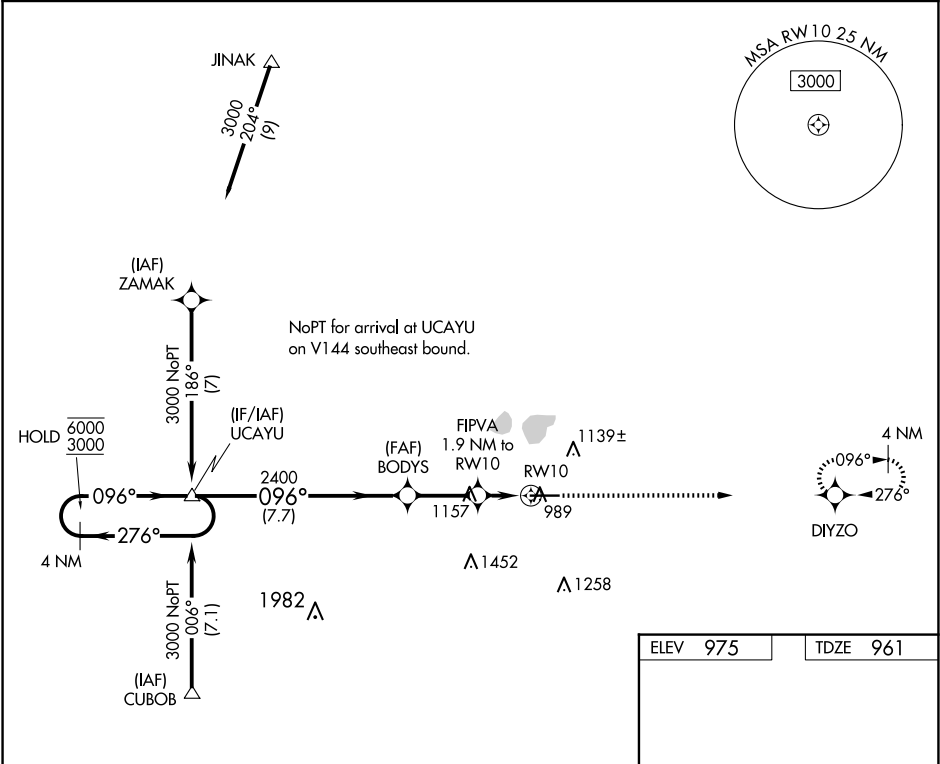


WAAS CH 65816 W10A	APP CRS 096°	Rwy Idg TDZE Apt Elev	6000 961 975
--	------------------------	-----------------------------	---

RNAV (GPS) RWY 10

LIMA ALLEN COUNTY (AOH)

RNP APCH.		MISSED APPROACH: Climb to 3000 direct DIYZO and hold.
Rwy 10 helicopter visibility reduction below ¾ SM NA. For uncompensated Baro-VNAV systems, LNAV/VNAV NA below -16°C or above 54°C.		
ASOS 128.725	COLUMBUS APP CON 121.825 323.15	UNICOM 122.7 (CTAF) 0



4 NM Holding Pattern		UCAJU	BODYD	FIPVA	3000	DIYZO
6000 ← 276°		096° →	096° →	1.9 NM to RWY 10	↑	★
GP 3.00° TCH 45		2400	2400	*1.3 NM to RWY 10	*LNAV only	
7.7 NM		2.5 NM	0.6	1.3 NM		
CATEGORY	A	B	C	D		
LPV DA	1211-1		250 (300-1)			
LNAV/VNAV DA	1272-1		311 (300-1)			
LNAV MDA	1420-1 459 (500-1)		1420-1 459 (500-1 3/8)			

EC-2, 07 AUG 2025 to 04 SEP 2025

EC-2, 07 AUG 2025 to 04 SEP 2025