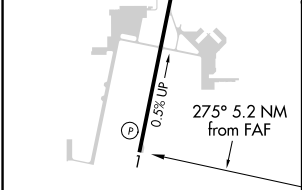
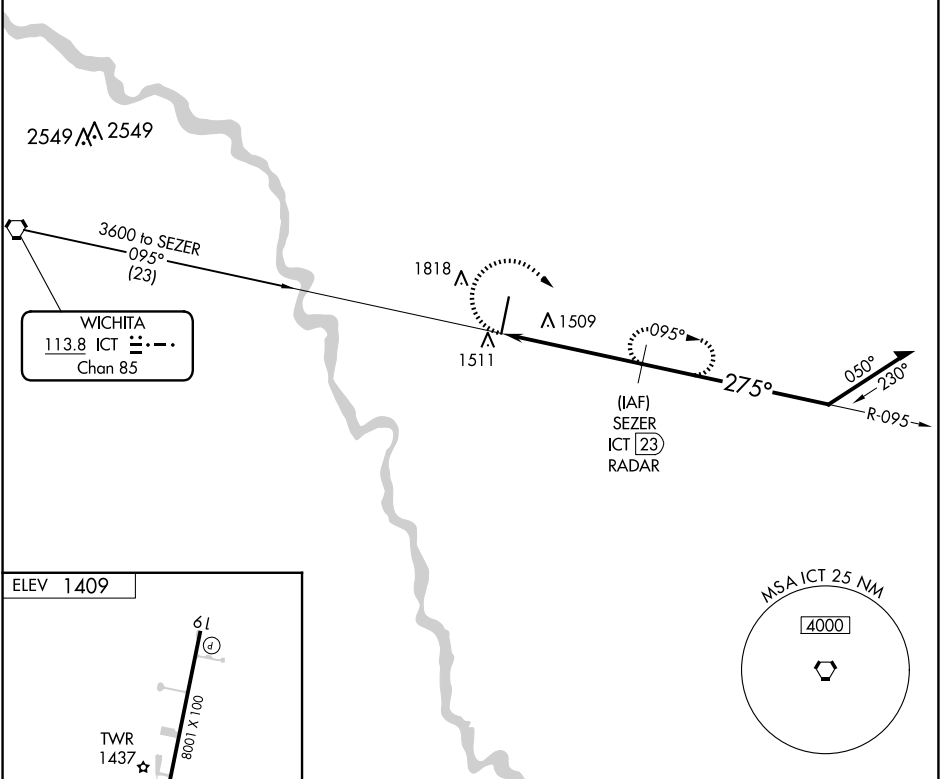


VORTAC ICT <b>113.8</b> Chan <b>85</b>	APP CRS <b>275°</b>	Rwy Idg TDZE Apt Elev <b>1409</b>	N/A N/A <b>1409</b>
--	------------------------	--	---------------------------

VOR-B  
BEECH FACTORY (BEC)

▼ ▲ NA Obtain local altimeter setting on CTAF; when not received, use Wichita Dwight D Eisenhower Ntl altimeter setting and increase all MDA 40 feet and increase Cat C and D visibility ¼ mile.		MISSED APPROACH: Climbing right turn to 3000 on ICT VORTAC R-095 to SEZER/ICT 23 DME/RADAR and hold.		
AWOS-3PT <b>119.45</b>	WICHITA APP CON <b>134.8 269.1</b>	BEECH TOWER ★ <b>126.8 (CTAF) 0 313.6</b>	GND CON <b>121.7</b>	CLNC DEL <b>125.0</b> (When tower closed)
UNICOM <b>122.95</b>				

RADAR or DME REQUIRED



FAF to MAP 5.2 NM					
Knots	60	90	120	150	180
Min:Sec	5:12	3:28	2:36	2:05	1:44

3000 ICT R-095		SEZER ICT 23 RADAR	SEZER ICT 23 RADAR		Remain within 10 NM
ICT 17.8		2900		3000	
5.2 NM					
CATEGORY	A	B	C	D	
CIRCLING	1840-1 431 (500-1)	2120-1 711 (800-1)	2120-2 711 (800-2)	2120-2 ¼ 711 (800-2 ¼)	