

VOR/DME EHK	APP CRS	Rwy Idg	8653
117.3	177°	TDZE	5605
Chan 120		Apt Elev	5622

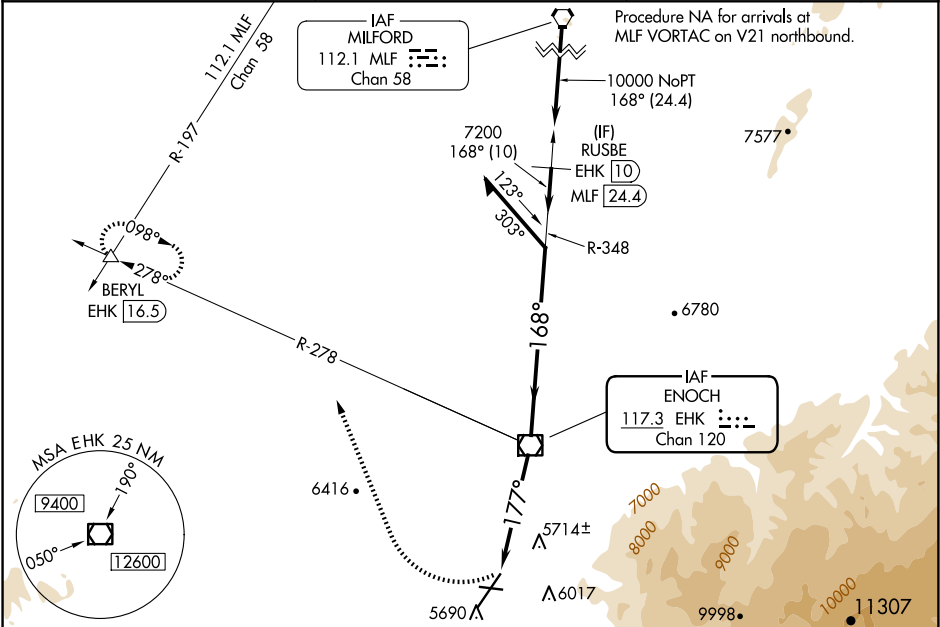
VOR RWY 20  
CEDAR CITY RGNL (CDC)

**⚠** Circling NA southeast of Rwy 2-20.  
For inop ALS S-20\* increase Cat C/D  
visibility to 1½ SM.

**MALSR**

**MISSED APPROACH:** Climbing right turn to 11500 on heading 322° and on EHK VOR/DME R-278 to BERYL INT/EHK 16.5 DME and hold, continue climb-in-hold to 11500.  
\*Missed approach requires minimum climb of 247 feet per NM to 7500.

ASOS 119.025	SALT LAKE CITY CENTER 125.575 379.275	UNICOM 123.0 (CTAF)
-----------------	--	------------------------



ELEV 5622 **D** TDZE 5605

177°

4822 X 60  
0.9% UP

8653 X 150  
0.7% UP

HIRL Rwy 2-20  
MIRL Rwy 8-26  
REIL Rwy 2, 8 and 26

FAF to MAP 4.8 NM

Knots	60	90	120	150	180
Min:Sec	4:48	3:12	2:24	1:55	1:36

11500	EHK R-278	BERYL	EHK VOR/DME 10800	Remain within 10 NM
hdg 322°			348°	
	EHK 4.8	EHK 3.6	3.07° TCH 50	168°
	1.1 NM	3.6 NM	7200	8700
CATEGORY	A	B	C	D
S-20*	6020-½	415 (400-½)	6020-¾	415 (400-¾)
S-20	6300-½	695 (700-½)	6300-1½	695 (700-1½)
CIRCLING	6300-1	678 (700-1)	6300-2	6300-2¼
			678 (700-2)	678 (700-2¼)

SW-4, 07 AUG 2025 to 04 SEP 2025

SW-4, 07 AUG 2025 to 04 SEP 2025