

CEDAR CITY, UTAH

AL-5139 (FAA)

25051

WAAS CH <b>72640</b> <b>W20A</b>	APP CRS <b>200°</b>	Rwy Idg <b>8653</b> TDZE <b>5605</b> Apt Elev <b>5622</b>
--	------------------------	---

# RNAV (GPS) RWY 20

RNP APCH.

**T**  
**A** Circling NA east of Rwy 2-20. Baro-VNAV NA.  
For inop ALS, increase LNAV/VNAV all Cats visibility to  
1½ SM and LNAV Cats C/D visibility to 1½ SM.

MALS

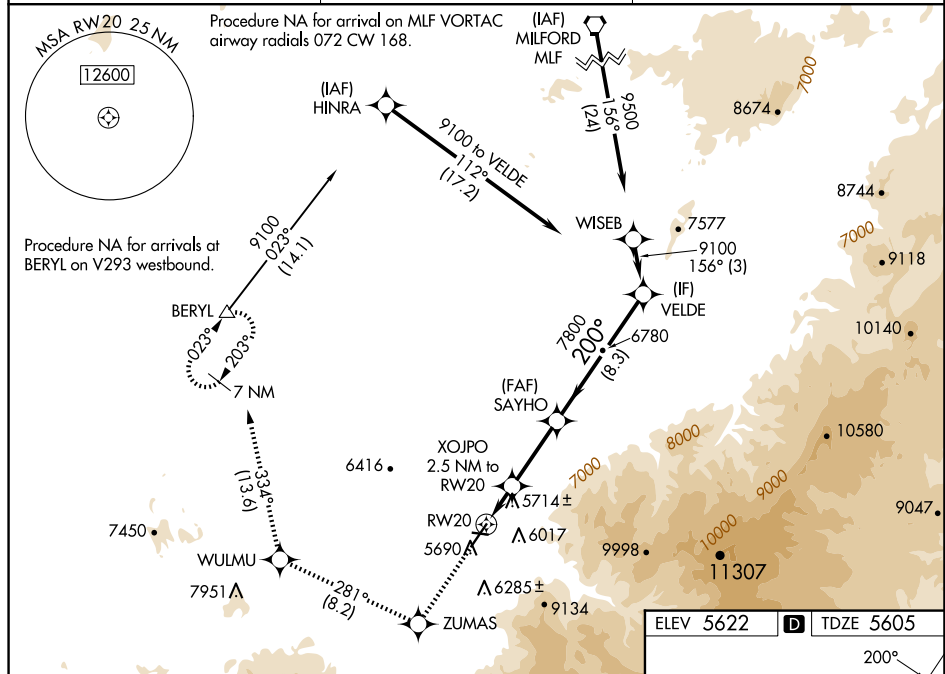


**MISSED APPROACH:** Climb to 9800  
direct ZUMAS and on track 281°  
to WULMU and on track 334° to  
BERYL and hold.

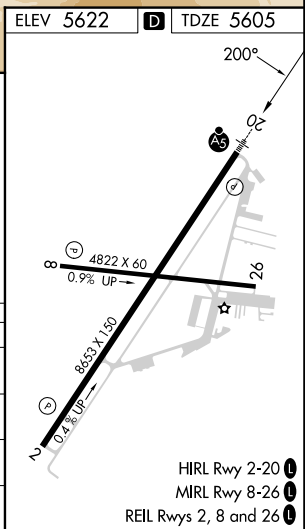
ASOS  
**119.025**

SALT LAKE CITY CENTER  
125.575 379.275

UNICOM  
123.0 (CTAF) **L**



9800 ↑	ZUMAS ✱ tr 281°	WULMU ✱	tr 334°	BERYL △	SAYHO 7800	VELDE 9100
<p>*INAV only</p>						
CATEGORY	A		B		C	D
LPV DA	5825-½		220 (300-½)			
INAV/ VNAV DA	6015-¾		410 (400-¾)			
INAV MDA	6180-½ 575 (600-½)		6180-1¼ 575 (600-1¼)			
<b>C</b> CIRCLING	6180-1 558 (600-1)		6180-1½ 558 (600-1½)		6180-2 558 (600-2)	



CEDAR CITY, UTAH  
Amdt 2A 16JUN22

37°42'N-113°06'W

CEDAR CITY RGNL (CDC)  
RNAV (GPS) RWY 20

SW-4, 07 AUG 2025 to 04 SEP 2025

SW-4, 07 AUG 2025 to 04 SEP 2025