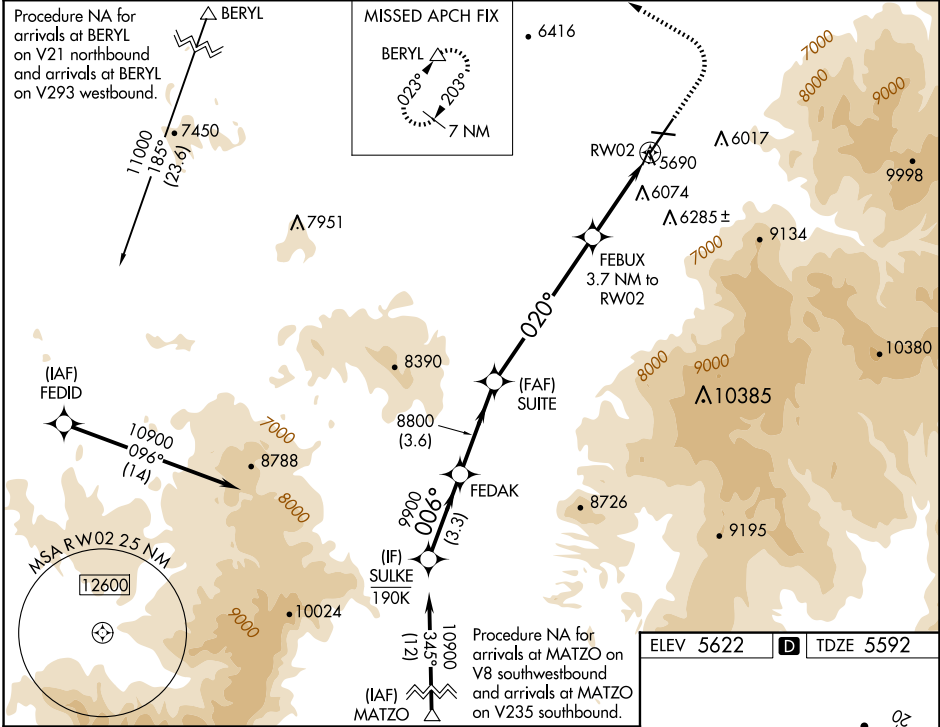


WAAS CH 49143 W02A	APP CRS 020°	Rwy Idg TDZE 5592 Apt Elev 5622
--	------------------------	---

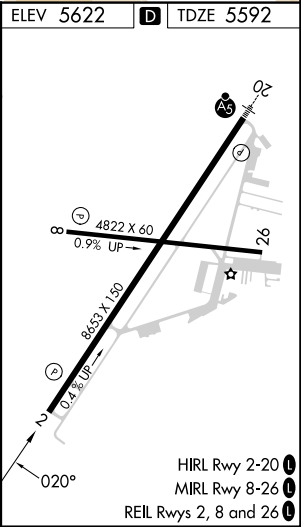
RNAV (GPS) RWY 2
CEDAR CITY RGNL (CDC)

RNP APCH.	MISSED APPROACH: Climb to 6800 then climbing left turn to 9800 direct BERYL and hold.
Circling NA east of Rwy 2-20. Baro-VNAV NA.	

ASOS 119.025	SALT LAKE CITY CENTER 125.575 379.275	UNICOM 123.0 (CTAF) 0
------------------------	---	---------------------------------



	SULKE	FEDAK	SUITE	FEBUX	BERYL
	10900	8800	8800	9800	5690
	GP 3.00° TCH 49	006°	020°	020°	
	3.3 NM	3.6 NM	6.3 NM	1.8 NM	1.9 NM
CATEGORY	A	B	C	D	
LPV DA	5867-7/8		275 (300-7/8)		
LNAV/VNAV	6394-2 1/2		802 (800-2 1/2)		
LNAV MDA	6240-1	648 (700-1)	6240-1 7/8	648 (700-1 7/8)	
CIRCLING	6240-1	618 (700-1)	6240-1 7/8	6240-2	
			618 (700-1 7/8)	618 (700-2)	



SW-4, 07 AUG 2025 to 04 SEP 2025

SW-4, 07 AUG 2025 to 04 SEP 2025