

LOC I-ECC	APP CRS	Rwy Idg	8653
110.1	200°	TDZE	5605
		Apt Elev	5622

ILS or LOC RWY 20

CEDAR CITY RGNL(CDC)

DME required.

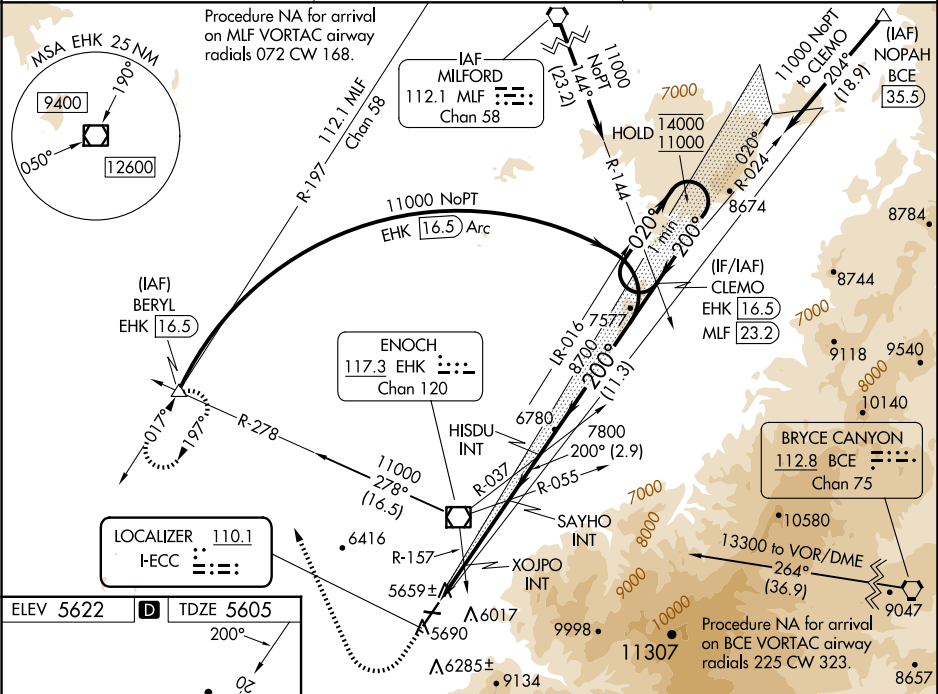
▼

▲NA

XOJPO fix minimums (Dual VOR receivers required): For inop ALS, increase S-LOC 20 Cats C/D visibility to 1½ SM. For inop ALS, increase S-LOC 20 Cats C/D visibility to 2½ SM.
#For inop ALS, increase S-ILS 20 visibility all Cats to 1 SM.

MALSRMISSED APPROACH: Climb to 6200 then climbing right turn to 10000 on heading 322° and on EHK R-278 to BERYL INT/EHK 16.5 DME and hold, continue climb-in-hold to 10000.
† Missed approach requires minimum climb of 210 feet per NM to 7300.

ASOS	SALT LAKE CITY CENTER	UNICOM
119.025	125.575 379.275	123.0 (CTAF) 0



ELEV 5622 TDZE 5605

200°

4822 X 60

0.9% UP

8653 X 150

0.4% UP

HIRL Rwy 2-20
MIRL Rwy 8-26
REIL Rws 2, 8 and 26

FAF to MAP 6.7 NM

Knots	60	90	120	150	180
Min:Sec	6:42	4:28	3:21	2:41	2:14

6200 ↑		10000 hdg 322°		EHK R-278		BERYL △		CLEMO EHK 16.5		One Minute Holding Pattern	
*LOC only				XOJPO INT		SAYHO INT 7800		HISDU INT		020° → 14000 ← 200° 11000	
				6440*		7800		8700		200°	
				2.4 NM		4.3 NM		2.9 NM		11.3 NM	
				GS 3.00°		TCH 47					
CATEGORY		A		B		C		D			
S-ILS 20†				5825-½		220 (300-½)					
S-ILS 20 #				5882-½		277 (300-½)					
S-LOC 20		6440-½ 835 (900-½)		6440-¾ 835 (900-¾)		6440-1⅞ 835 (900-1⅞)					
XOJPO FIX MINIMUMS (DUAL VOR RECEIVERS REQUIRED)											
S-LOC 20		6100-½ 495 (500-½)				6100-1 495 (500-1)					