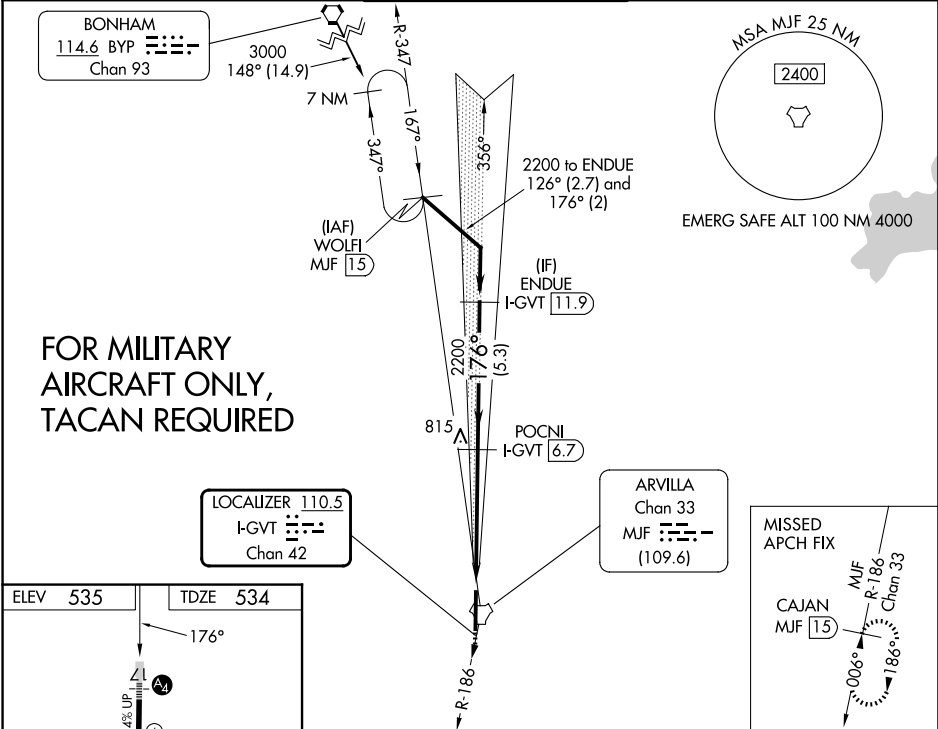


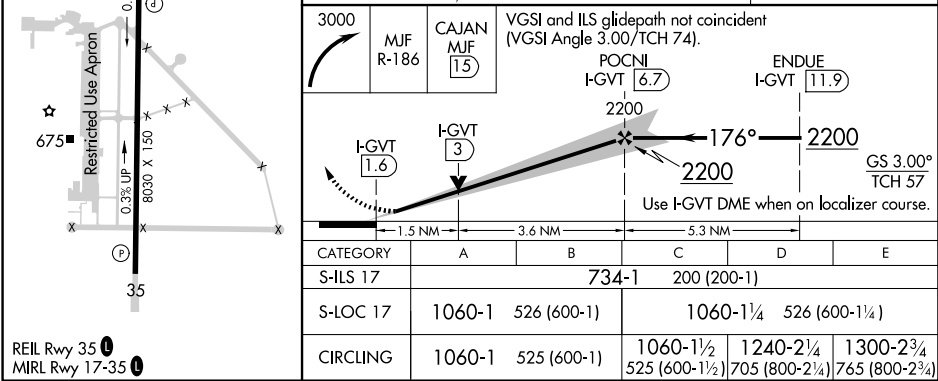
LOC/DME I-GVT 110.5 Chan 42	APP CRS 176°	Rwy Ldg TDZE 534 Apt Elev 535
---	------------------------	---

ILS Y or LOC Y RWY 17
MAJORS (GVT)

DME required.			MALSA	MISSED APPROACH: Climbing right turn to 3000 on MUF TACAN R-186 to CAJAN/MUF TACAN 15 DME and hold.
<div><div></div><div>Inop table does not apply to S-ILS 17 all Cats and S-LOC 17 Cats A/B. For inop ALS, increase S-LOC 17 Cat E visibility to 1½ SM. Autopilot coupled approach NA below 900 feet.</div></div>				
AWOS-3 133.425	FORT WORTH CENTER 132.025 317.75	MAJORS TOWER ★ 118.65 (CTAF) 0 385.425	GND CON 121.7 335.8	UNICOM 122.95



FOR MILITARY
AIRCRAFT ONLY,
TACAN REQUIRED



SC-2, 07 AUG 2025 to 04 SEP 2025

SC-2, 07 AUG 2025 to 04 SEP 2025