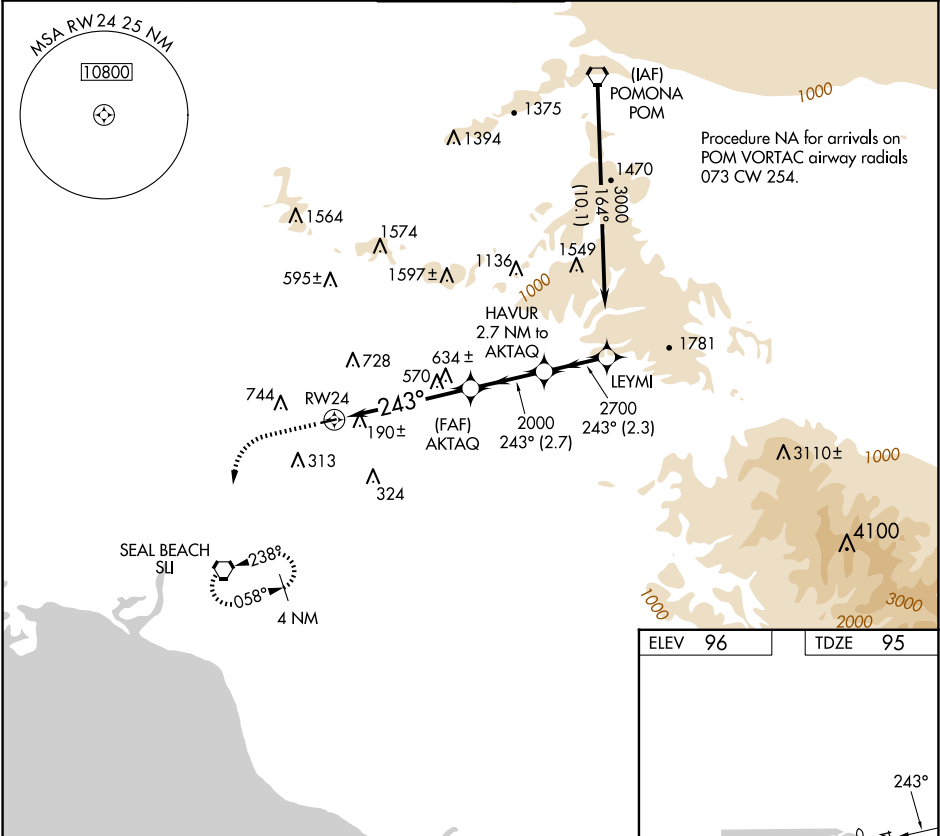


APP CRS	Rwy Idg	2868
243°	TDZE	95
	Apt Elev	96

RNAV (GPS) RWY 24  
FULLERTON MUNI (FUL)

RNP APCH.	MISSED APPROACH: Climb to 1300, then climbing left turn to 2600 direct SUI VORTAC and hold.
▼ Inoperative table does not apply. ▲ NA Helicopter visibility reduction below 1 SM NA.	

ATIS 125.05	SOCAL APP CON 125.35 316.125	FULLERTON TOWER ★ 119.1 (CTAF) 0	GND CON 121.8	UNICOM 122.95
----------------	---------------------------------	-------------------------------------	------------------	------------------



1300	2600	SUI
VGS and descent angles not coincident (VGS Angle 4.00/TCH 33).		
RWY 24		
AKTAQ		
HAVUR 2.7 NM to AKTAQ		
LEYMI		
3000		
2700		
2000		
TCH 40		
Procedure Turn NA		
CATEGORY	A	B
LNAV MDA	900-1 805 (900-1)	900-1 1/4 805 (900-1 1/4)
NA		
MIRL Rwy 6-24 0		
REIL Rwy 6 and 24 0		

SW-3, 07 AUG 2025 to 04 SEP 2025

SW-3, 07 AUG 2025 to 04 SEP 2025