

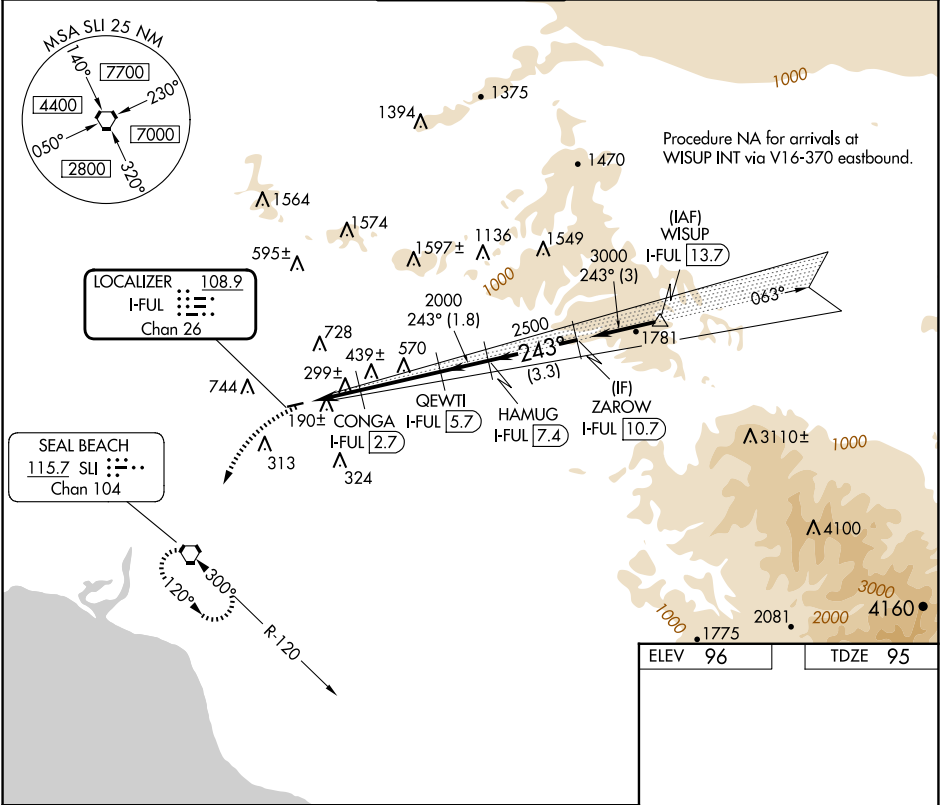
LOC/DME I-FUL	APP CRS	Rwy Idg	2868
108.9	243°	TDZE	95
Chan 26		Apt Elev	96

LOC/DME RWY 24

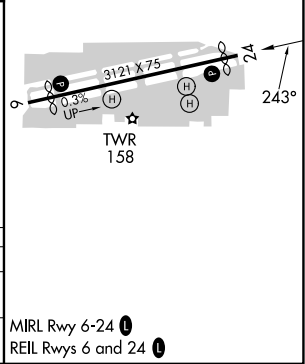
FULLERTON MUNI (F'UL)

<div><div></div><div></div></div> <div>Inoperative table does not apply. Night landing: Rwy 6 NA. Helicopter visibility reduction below 1 SM NA.</div>	MISSED APPROACH: Climbing left turn to 2600 direct SLI VORTAC and hold.
--	--

ATIS 125.05	SOCAL APP CON 125.35 316.125	FULLERTON TOWER★ 119.1 (CTAF) 0	GND CON 121.8	UNICOM 122.95
----------------	---------------------------------	------------------------------------	------------------	------------------



<div><div></div><div></div></div> <div>2600</div>	SLI <div></div>	VGSI and descent angles not coincident (VGSI Angle 4.00/TCH 33).	ZAROW I-FUL 10.7	
<div><div></div><div></div></div> <div>920</div>	CONGA I-FUL 2.7	QEWTI I-FUL 5.7	HAMUG I-FUL 7.4	
<div><div></div><div></div></div> <div>2000</div>	<div><div></div><div></div></div> <div>2500</div>	<div><div></div><div></div></div> <div>3000</div>	Procedure Turn NA	
2.2 NM	2.9 NM	1.8 NM	3.3 NM	
CATEGORY	A	B	C	D
S-24	560-1	465 (500-1)	NA	
CIRCLING	760-1 664 (700-1)	1060-1½ 964 (1000-1½)	NA	



SW-3, 07 AUG 2025 to 04 SEP 2025

SW-3, 07 AUG 2025 to 04 SEP 2025