

RNP APCH.

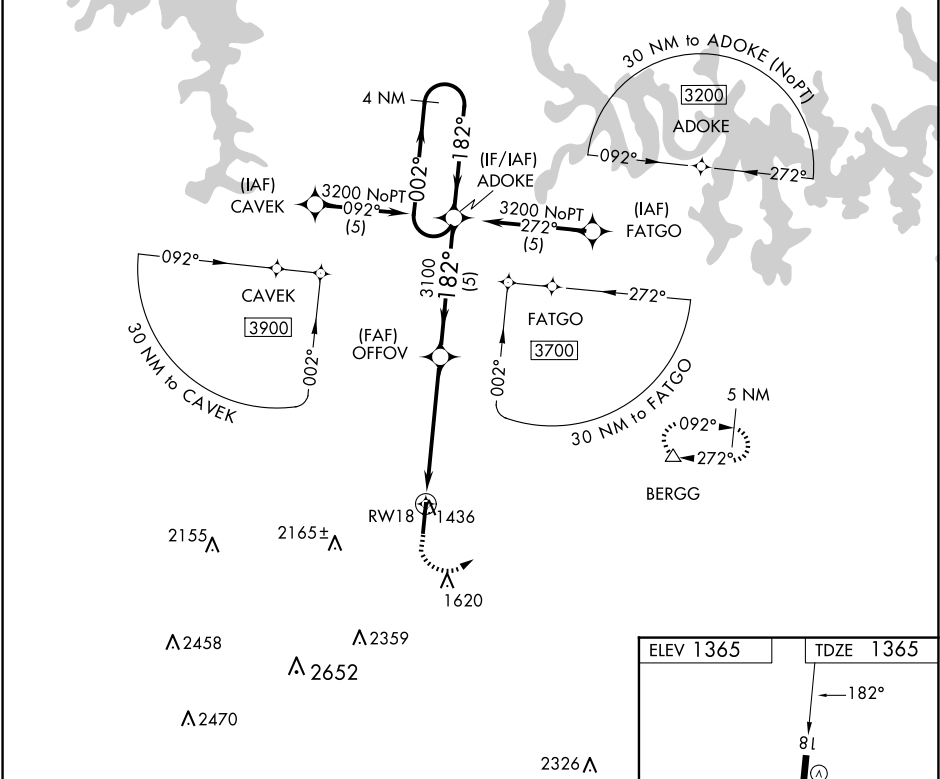
▼

▲

Rwy 18 helicopter visibility reduction below ¾ SM NA.

MISSED APPROACH: Climb to 1800 then climbing left turn to 3200 direct BERGG and hold.

ASOS 121.125	MEMPHIS CENTER 126.85 281.55	UNICOM 123.0 (CTAF) 1
-----------------	---------------------------------	--------------------------



1800

3200

BERGG

VGSI and descent angles not coincident (VGSI Angle 3.00/TCH 50).

4 NM Holding Pattern

OFFOV

ADOKE

3100

3200

002°

182°

182°

1 NM to RW18

3.00° TCH 54

1 NM

4.3 NM

5 NM

CATEGORY	A	B	C	D
LNVA MDA	1720-1	355 (400-1)		
CIRCLING	1840-1 475 (500-1)	1860-1 495 (500-1)	2340-3 975 (1000-3)	2560-3 1195 (1200-3)

ELEV 1365

TDZE 1365

182°

81

6161 x 1365

36

AS

HIRL Rwy 18-36 1

REIL Rwy 18 1