

WAAS CH 82506 W29A	APP CRS 293°	Rwy Ldg TDZE Apt Elev	5400 660 660
----------------------------------------	------------------------	-----------------------------	-----------------------------------------

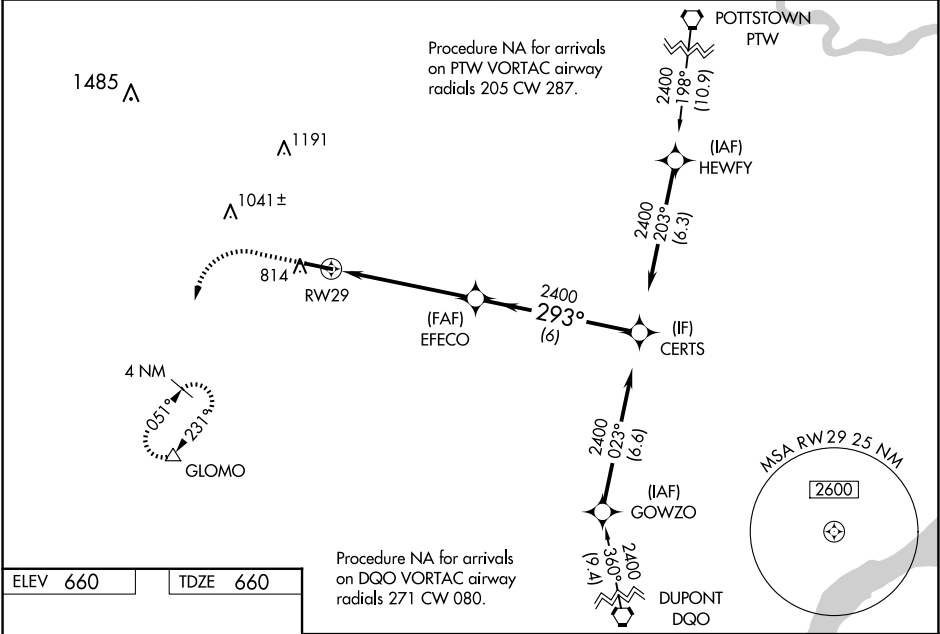
RNAV (GPS) RWY 29
CHESTER COUNTY G O CARLSON (MQS)

RNP APCH - GPS.

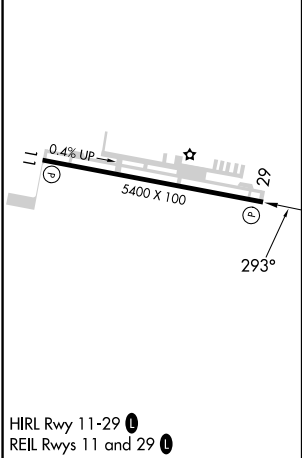
⚠ For uncompensated Baro-VNAV systems, LNAV/VNAV NA below -16°C or above 54°C.

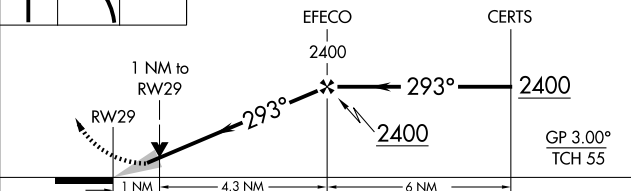
MISSED APPROACH: Climb to 1300 then climbing left turn to 3000 direct GLOMO and hold, continue climb-in-hold to 3000.

AWOS-3 126.25	PHILADELPHIA APP CON 124.35 319.15	CLNC DEL 125.6	UNICOM 122.7 (CTAF) 0
-------------------------	----------------------------------------------	--------------------------	---------------------------------



ELEV 660	TDZE 660
----------	----------



1300	3000	GLOMO		
↑	↖	△		
				
CATEGORY	A	B	C	D
LPV DA	910-¾		250 (300-¾)	
LNAV/ VNAV DA	915-¾		255 (300-¾)	
LNAV MDA	1020-1		360 (400-1)	
C CIRCLING	1140-1 480 (500-1)	1240-1 580 (600-1)	1260-1½ 600 (600-1½)	1420-2½ 760 (800-2½)

NE-4, 07 AUG 2025 to 04 SEP 2025

NE-4, 07 AUG 2025 to 04 SEP 2025