

WAAS CH 63006 W11A	APP CRS 113°	Rwy Ldg TDZE 644 Apt Elev 660
--	------------------------	---

RNAV (GPS) RWY 11

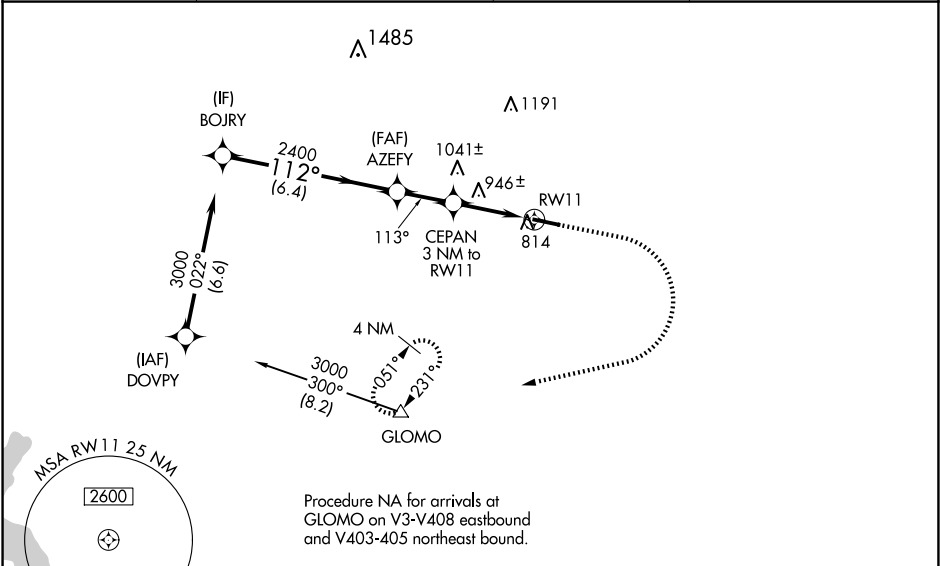
CHESTER COUNTY G O CARLSON (MQS)

RNP APCH - GPS.

Helicopter visibility reduction below ¾ SM NA.
For uncompensated Baro-VNAV systems,
LNAV/VNAV NA below -16°C or above 54°C.

MISSED APPROACH: Climb to
1300 then climbing right turn to
3000 direct GLOMO and hold,
continue climb-in-hold to 3000.

AWOS-3 126.25	PHILADELPHIA APP CON 124.35 319.15	CLNC DEL 125.6	UNICOM 122.7 (CTAF) 0
-------------------------	--	--------------------------	---------------------------------



ELEV 660		TDZE 644	
VGSI and RNAV glidepath not coincident (VGSI Angle 3.20/TCH 55).			
BOJRY		GLOMO	
3000		1300	
GP 3.20° TCH 55		3000	
AZEZY		GLOMO	
2400		1700	
CEPAN 3 NM to RW11		RW11	
1.6 NM to RW11		RW11	
6.4 NM		2.1 NM	
1.4		1.6	
CATEGORY	A	B	C
LPV DA	973-1		329 (400-1)
LNAV/VNAV DA	1091-1⅜		447 (500-1⅜)
LNAV MDA	1200-1	556 (600-1)	1200-1⅝ 556 (600-1⅝)
CIRCLING	1200-1 540 (600-1)	1240-1 580 (600-1)	1260-1⅝ 600 (600-1⅝) 1420-2½ 760 (800-2½)

HIRL Rwy 11-29
REIL Rws 11 and 29