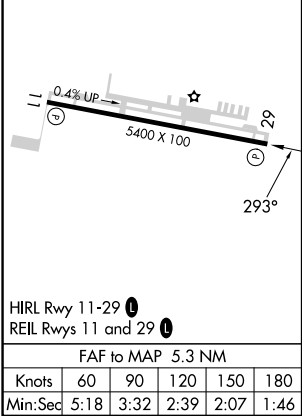
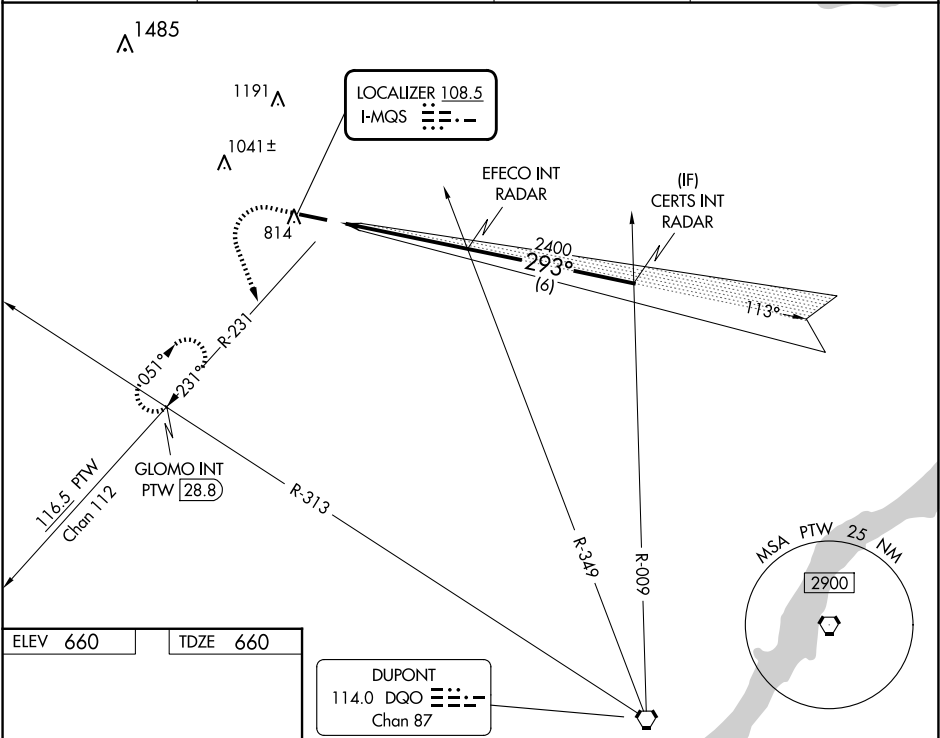


LOC I-MQS <b>108.5</b>	APP CRS <b>293°</b>	Rwy Ldg TDZE Apt Elev <b>5400</b> <b>660</b> <b>660</b>
---------------------------	------------------------	--

ILS or LOC RWY 29

CHESTER COUNTY G O CARLSON (MQS)

RADAR required for procedure entry.		MISSED APPROACH: Climb to 1300 then climbing left turn to 3000 on heading 170° and PTW R-231 to GLOMO INT/PTW 28.8 DME and hold, continue climb-in-hold to 3000.	
AWOS-3 <b>126.25</b>	PHILADELPHIA APP CON <b>124.35 319.15</b>	CLNC DEL <b>125.6</b>	UNICOM <b>122.7 (CTAF) 0</b>



DUPONT 114.0 DME Chan 87				
1300	3000	PTW R-231	GLOMO INT PTW 28.8	EFECO INT RADAR
hdg 170°				
2400				
293°				
2400				
GS 3.00°				
TCH 55				
5.3 NM				
6 NM				
CATEGORY	A	B	C	D
S-ILS 29	910-3/4 250 (300-3/4)			
S-LOC 29	1040-1 380 (400-1)			
CIRCLING	1140-1 480 (500-1)	1240-1 580 (600-1)	1260-1 1/2 600 (600-1 1/2)	1420-2 1/2 760 (800-2 1/2)