

WAAS CH 61343 W12A	APP CRS 118°	Rwy Idg TDZE Apt Elev	5400 897 919
--	------------------------	-----------------------------	---

RNAV (GPS) RWY 12

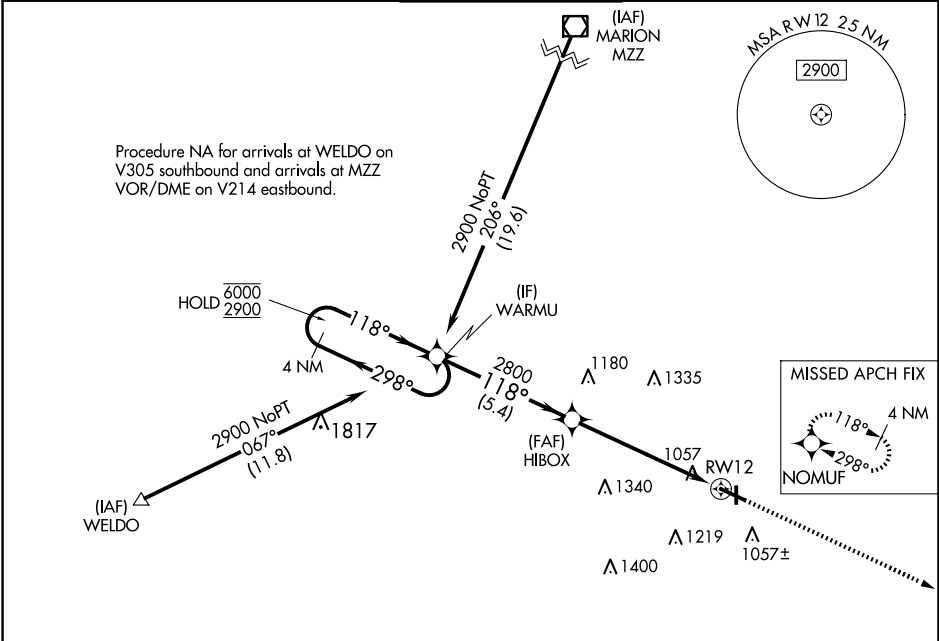
ANDERSON RGNL (AID)

RNP APCH.

For uncompensated Baro-VNAV systems, procedure NA below -16°C or above 54°C.

MISSED APPROACH: Climb to 3000 direct NOMUF and hold.

AWOS-3 128.55	INDIANAPOLIS APP CON 120.65 317.8	ANDERSON TOWER ★ 126.0 (CTAF) 0	GND CON 121.6	UNICOM 122.95
-------------------------	---	---	-------------------------	-------------------------



4 NM Holding Pattern

WARMU

6000 2900

298° 118°

GP 3.00° TCH 45

HIBOX

2800

1.2 NM to RWY 12

RWY 12

5.4 NM 4.7 NM 1.2

ELEV 919 TDZE 897

3000 NOMUF

118° TWR 957 81 992 3399 5400 X 100 36 36

CATEGORY	A	B	C	D
LPV DA		1157-3/4	260 (300-3/4)	
LNAV/VNAV DA		1218-1	321 (300-1)	
LNAV MDA	1340-1	443 (500-1)	1340-1 3/8	443 (500-1 3/8)
CIRCLING	1360-1 441 (500-1)	1400-1 481 (500-1)	1520-1 3/4 601 (700-1 3/4)	1520-2 601 (700-2)

MIRL Rwy 12-30 and 18-36
REIL Rwy 12