

LOC I-AID
110.1

APP CRS
298°

Rwy Idg
TDZE
Apt Elev
5320
919
919

ILS or LOC RWY 30
ANDERSON RGNL (AID)

ADF required.
RADAR required for procedure entry.

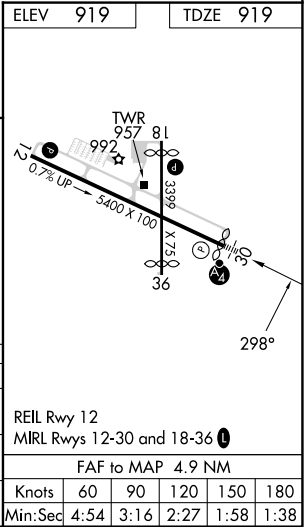
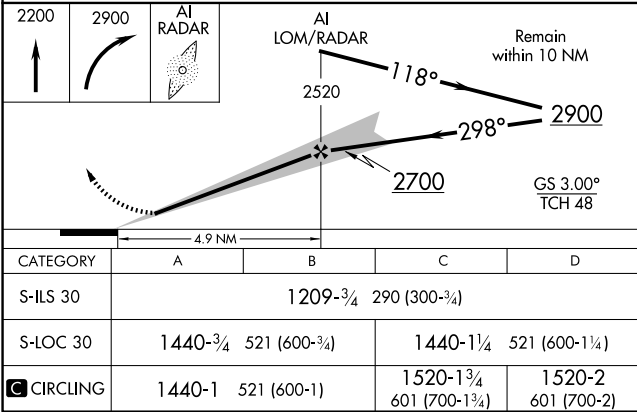
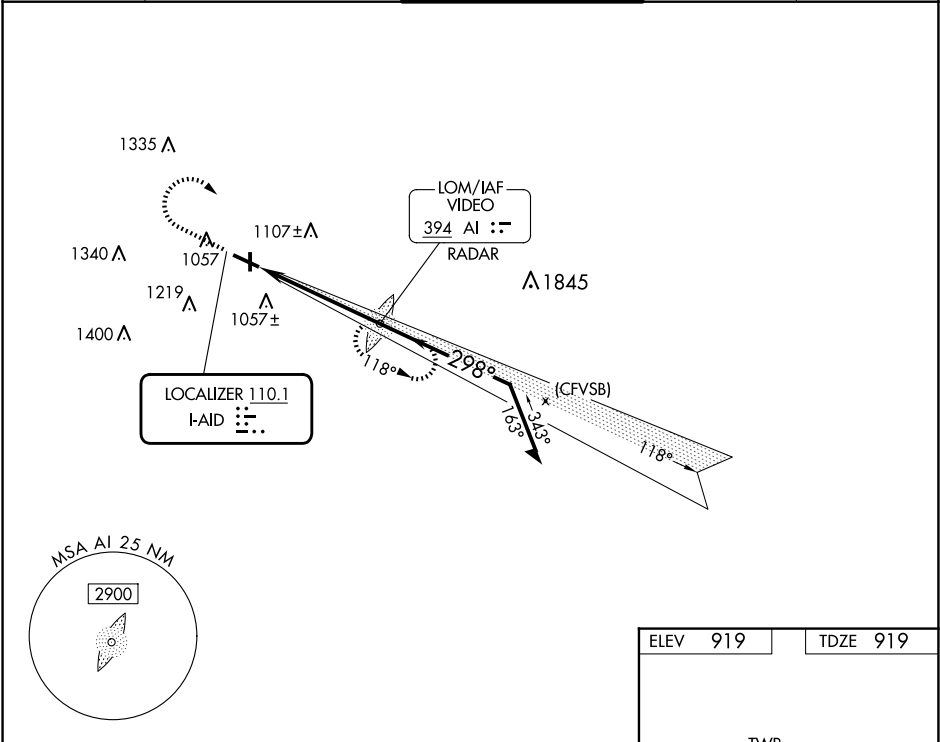
MALSF

MISSED APPROACH: Climb to 2200 then climbing right turn to 2900 direct VIDEO LOM/RADAR and hold.

▼ Rwy 30 helicopter visibility reduction below ¾ SM NA.

▲ For inop ALS, increase S-ILS 30 all Cats visibility to ¾ SM.

AWOS-3 128.55	INDIANAPOLIS APP CON 120.65 317.8	ANDERSON TOWER ★ 126.0 (CTAF) 0	GND CON 121.6	UNICOM 122.95
-------------------------	---	--	-------------------------	-------------------------



EC-2, 07 AUG 2025 to 04 SEP 2025

EC-2, 07 AUG 2025 to 04 SEP 2025