

VORTAC MHZ	APP CRS	Rwy Idg	8500
113.2	349°	TDZE	346
Chan 79		Apt Elev	346

VOR/DME or TACAN RWY 34R

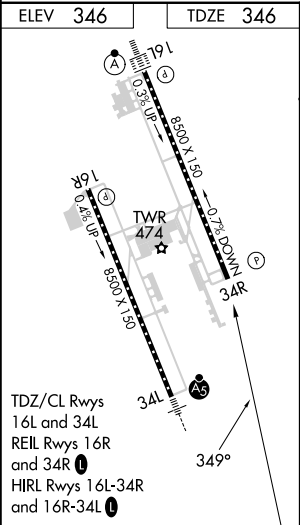
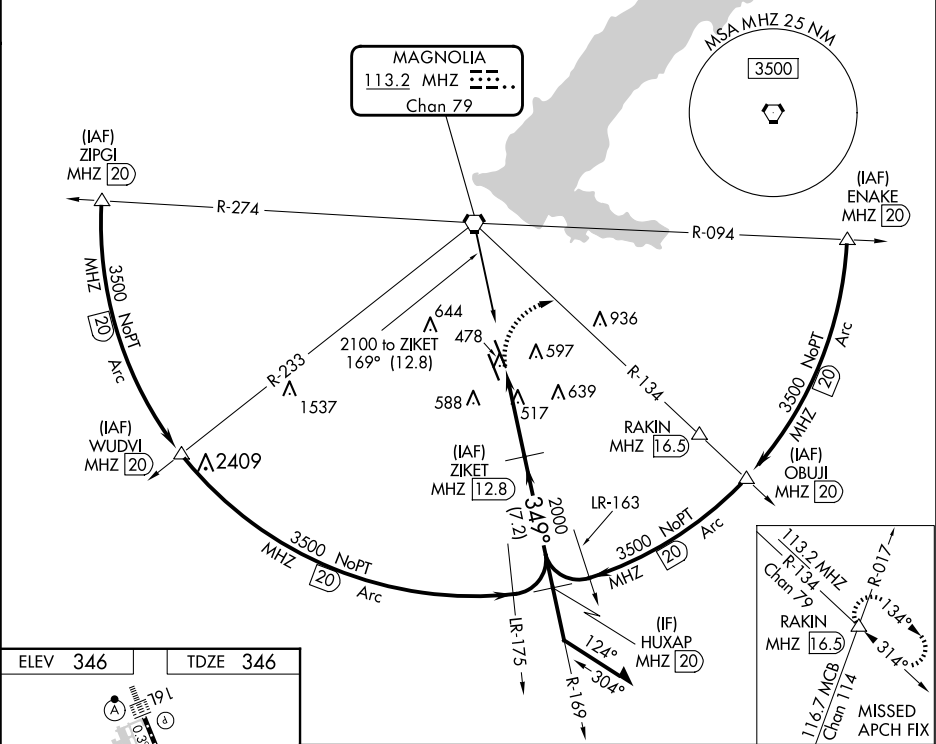
JACKSON-MEDGAR WILEY EVERS INTL (JAN)

⚠

When local alimeter setting not received, use Hawkins Fld alimeter setting and increase all MDA 20 feet; increase S-34R Cats C/D/E visibility 1/8 mile. Circling NA for Cat E southwest of Rwy 16R-34L. Helicopter visibility reduction below 3/4 SM NA.

MISSED APPROACH: Climbing right turn to 3000 on heading 120° and MHZ VORTAC R-134 to RAKIN INT/ MHZ 16.5 DME and hold.

ATIS 121.05	JACKSON APP CON★ 123.9 317.7	JACKSON TOWER★ 120.9 (CTAF) 0 352.0	GND CON 121.7 348.6	UNICOM 122.95
----------------	---------------------------------	--	------------------------	------------------



3000

hdg 120°

MHZ R-134

RAKIN

△

ZIKET

MHZ 12.8

Remain within 15 NM

MHZ 7.8

169°

2100

349°

2000

2.99°

TCH 66

CATEGORY	A	B	C	D	E
S-34R	920/55	574 (600-1)	920-1½	574 (600-1½)	
CIRCLING	920-1	574 (600-1)	920-1½ 574 (600-1½)	960-2 614 (700-2)	1040-2½ 694 (700-2½)