

JACKSON, MISSISSIPPI

AL-5132 (FAA)

25051

VORTAC MHZ 113.2 Chan 79	APP CRS 352°	Rwy Idg 8500 TDZE 329 Apt Elev 346
--	------------------------	---

VOR/DME or TACAN RWY 34L

JACKSON-MEDGAR WILEY EVERS INTL (JAN)

T When local altimeter setting not received, use Hawkins Fld altimeter setting and increase all MDA 20 feet; increase S-34L Cats C/D/E visibility $\frac{1}{8}$ mile.
A Circling NA for Cat E southwest of Rwy 16R-34L. Helicopter visibility reduction below $\frac{3}{4}$ SM NA.
ASR

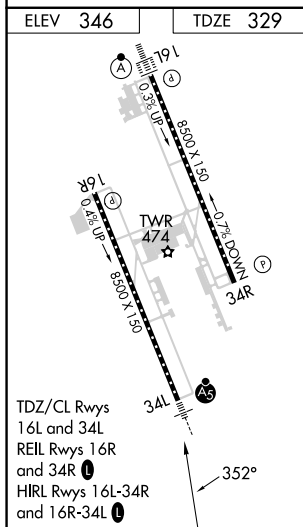
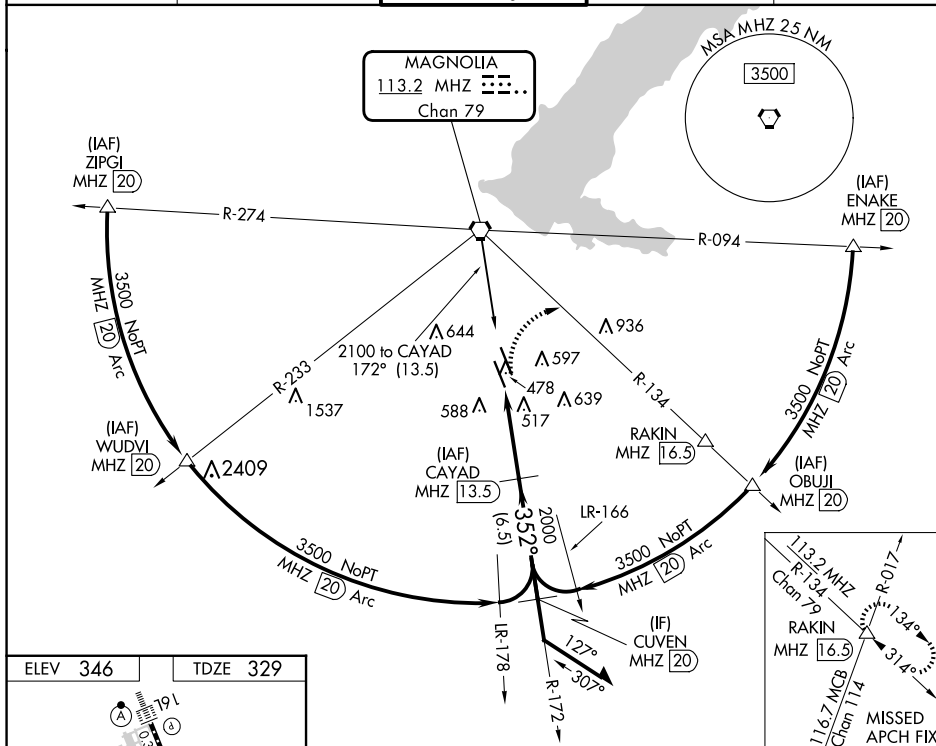
MALSR

A5

T

MISSED APPROACH: Climbing right turn to 3000 on heading 120° and MHZ VORTAC R-134 to RAKIN INT/ MHZ 16.5 DME and hold.

ATIS 121.05	JACKSON APP CON★ 123.9 317.7	JACKSON TOWER★ 120.9 (CTAF) 352.0	GND CON 121.7 348.6	UNICOM 122.95
----------------	---------------------------------	--------------------------------------	------------------------	------------------



	3000 hdg 120°	MHZ R-134	RAKIN △	CAYAD MHZ 13.5	172°	352°	2100	Remain within 15 NM
	MHZ 8.5	MHZ 9.9	1.4	3.6 NM	3.05° TCH 55	2000		
CATEGORY	A	B	C	D	E			
S-34L	840/55	511 (500-1)	840-1 $\frac{3}{8}$	511 (500-1 $\frac{3}{8}$)				
C CIRCLING	880-1 534 (600-1)	900-1 554 (600-1)	900-1 $\frac{1}{2}$ 554 (600-1 $\frac{1}{2}$)	960-2 614 (700-2)	1040-2 $\frac{1}{2}$ 694 (700-2 $\frac{1}{2}$)			

JACKSON, MISSISSIPPI

Orig-B 22APR21

32°19'N-90°05'W

JACKSON-MEDGAR WILEY EVERS INTL (JAN)

VOR/DME or TACAN RWY 34L

SC-4, 07 AUG 2025 to 04 SEP 2025