

JACKSON, MISSISSIPPI

AL-5132 (FAA)

25051

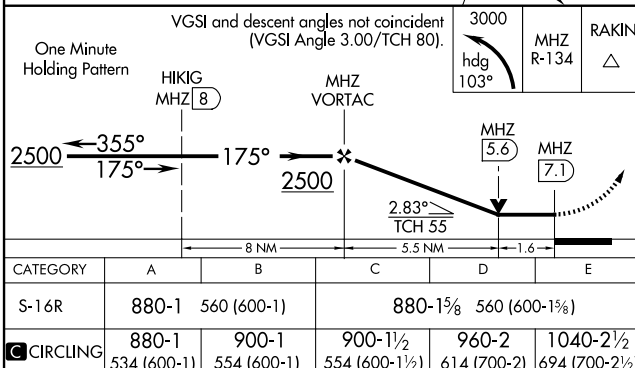
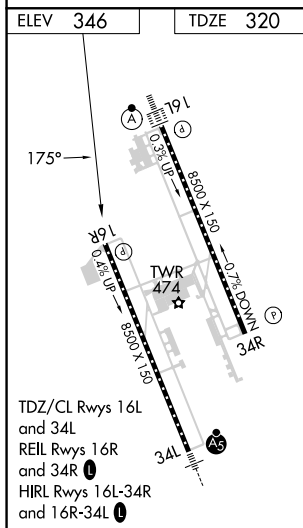
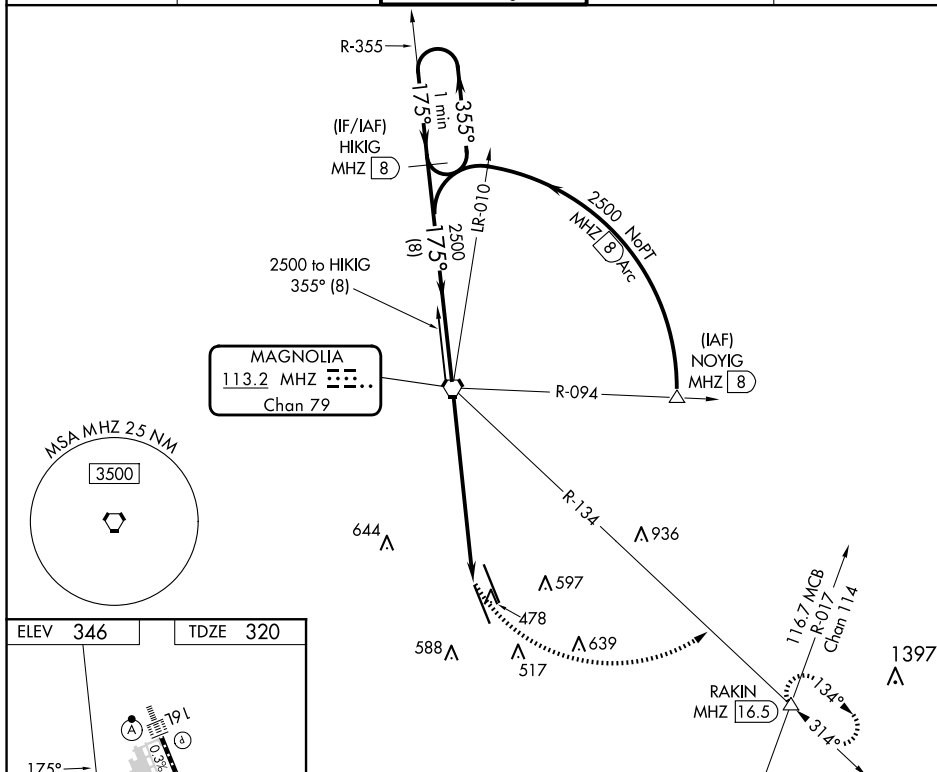
MHZ VORTAC 113.2 Chan 79	APP CRS 175°	Rwy Idg 8500 TDZE 320 Apt Elev 346
--	------------------------	---

VOR/DME or TACAN RWY 16R
JACKSON-MEDGAR WILEY EVERS INTL (JAN)

T VDP NA with Hawkins Fld altimeter setting. When local altimeter setting not received,
A use Hawkins Fld altimeter setting and increase all MDA 20 feet; increase S-16R Cats
ASR C/D/E visibility $\frac{1}{8}$ mile. Circling NA for Cat E SW of Rwy 16R-34L. Helicopter
visibility reduction below $\frac{3}{4}$ SM NA.

MISSED APPROACH: Climbing left turn to 3000 on heading 103° and MHZ VORTAC R-134 to RAKIN INT/MHZ 16.5 DME and hold.

ATIS 121.05	JACKSON APP CON★ 123.9 317.7	JACKSON TOWER★ 120.9 (CTAF) 0 352.0	GND CON 121.7 348.6	UNICOM 122.95
----------------	---------------------------------	--	------------------------	------------------



JACKSON, MISSISSIPPI
Orig-B 22APR21

32°19'N-90°05'W

JACKSON-MEDGAR WILEY EVERS INTL (JAN)

VOR/DME or TACAN RWY 16R

SC-4, 07 AUG 2025 to 04 SEP 2025

SC-4, 07 AUG 2025 to 04 SEP 2025